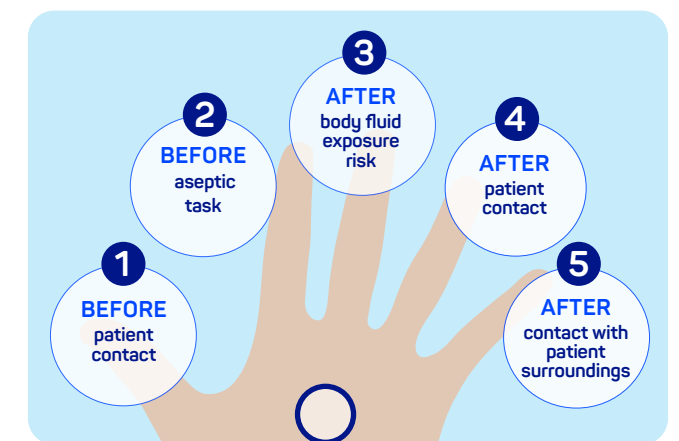
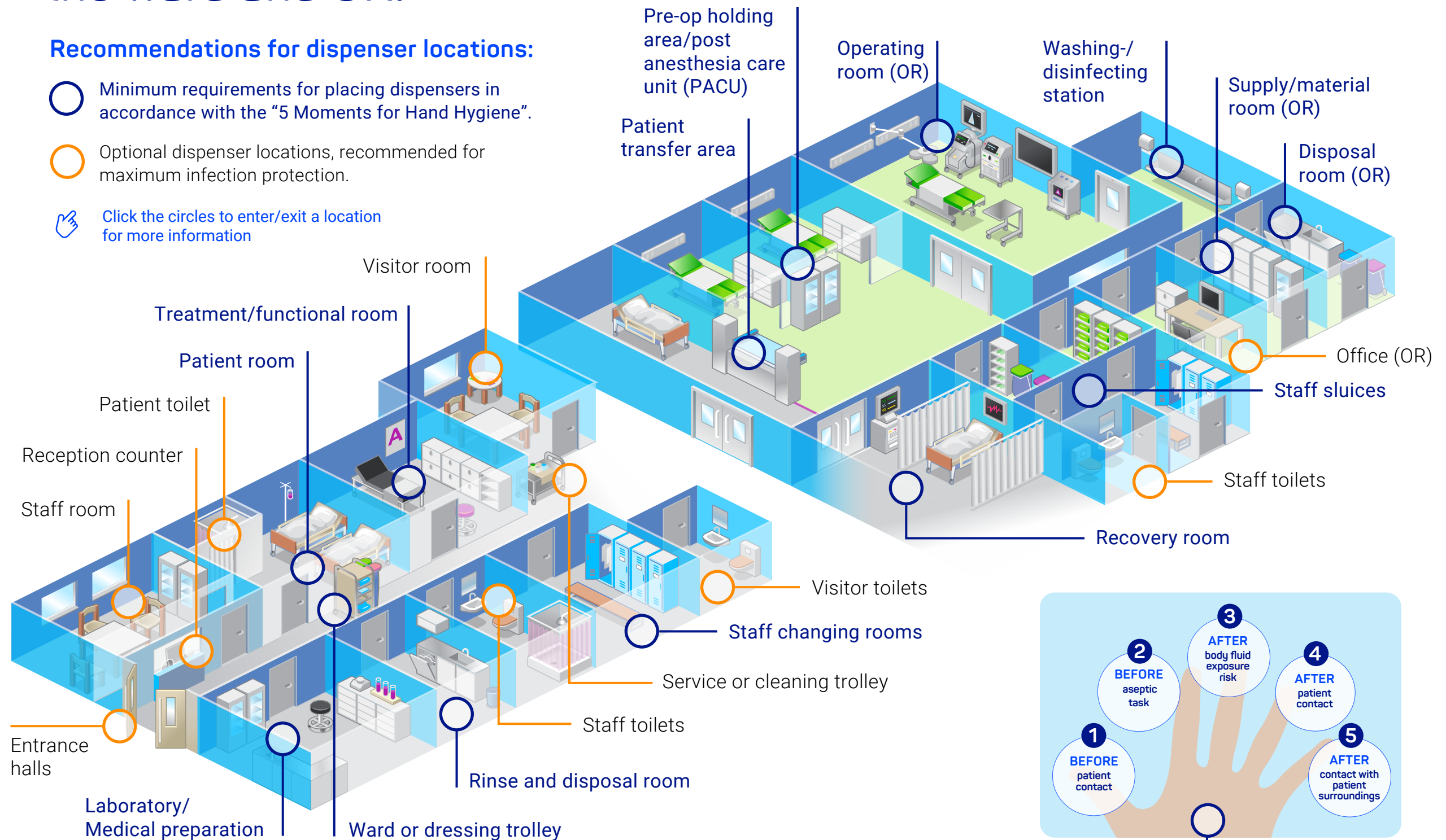


Placing our dispensers. The right dispenser for the ward and OR.

Recommendations for dispenser locations:




- Minimum requirements for placing dispensers in accordance with the "5 Moments for Hand Hygiene".
- Optional dispenser locations, recommended for maximum infection protection.
- 👉 Click the circles to enter/exit a location for more information

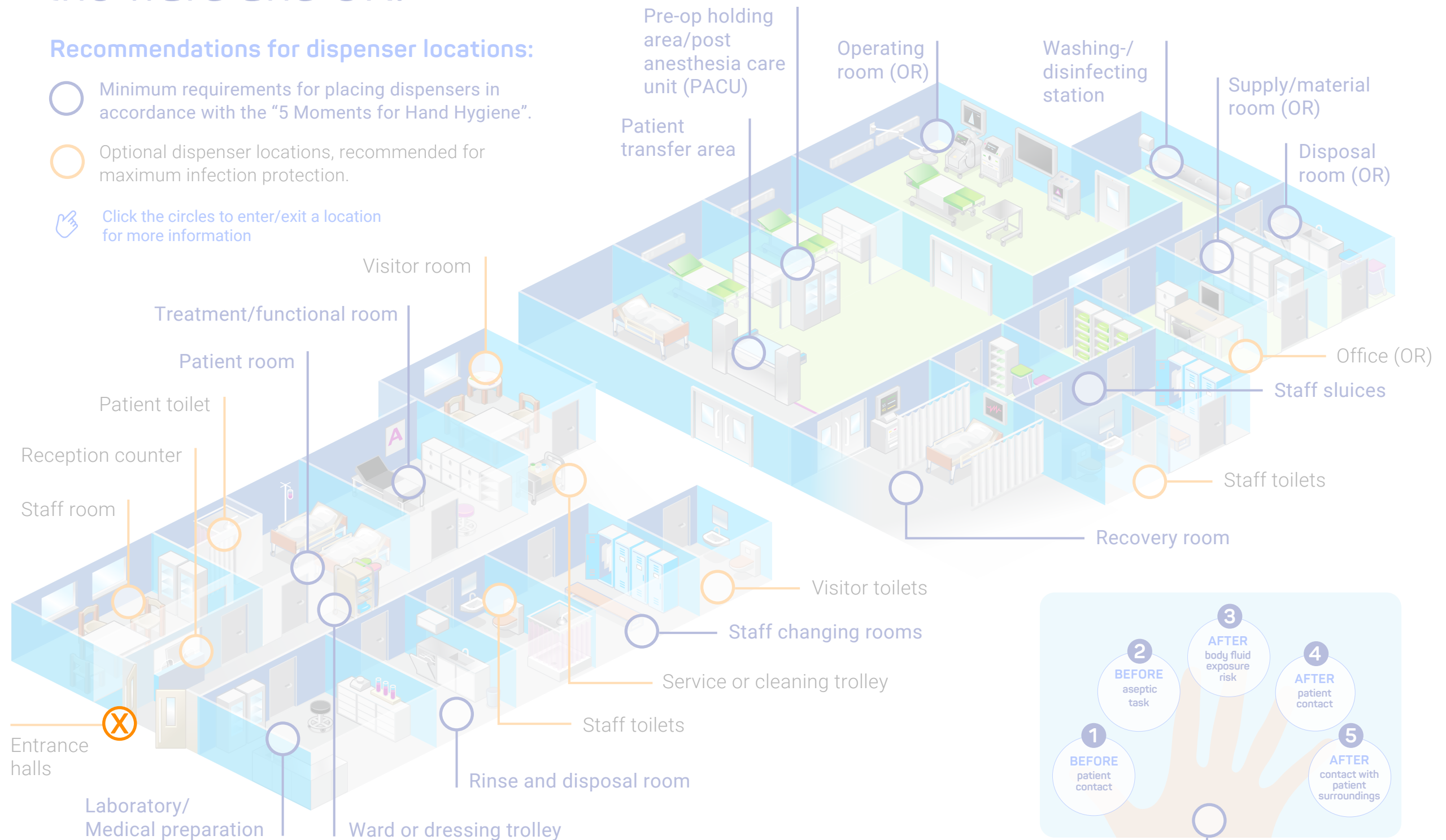


The "5 Moments for Hand Hygiene"

Placing our dispensers. The right dispenser for the ward and OR.

Recommendations for dispenser locations:

-  Minimum requirements for placing dispensers in accordance with the "5 Moments for Hand Hygiene".
-  Optional dispenser locations, recommended for maximum infection protection.
-  Click the circles to enter/exit a location for more information



The "5 Moments for Hand Hygiene"

Placing our dispensers The

Recommendations

- Minimum
- Optimal
- ✎ Click for



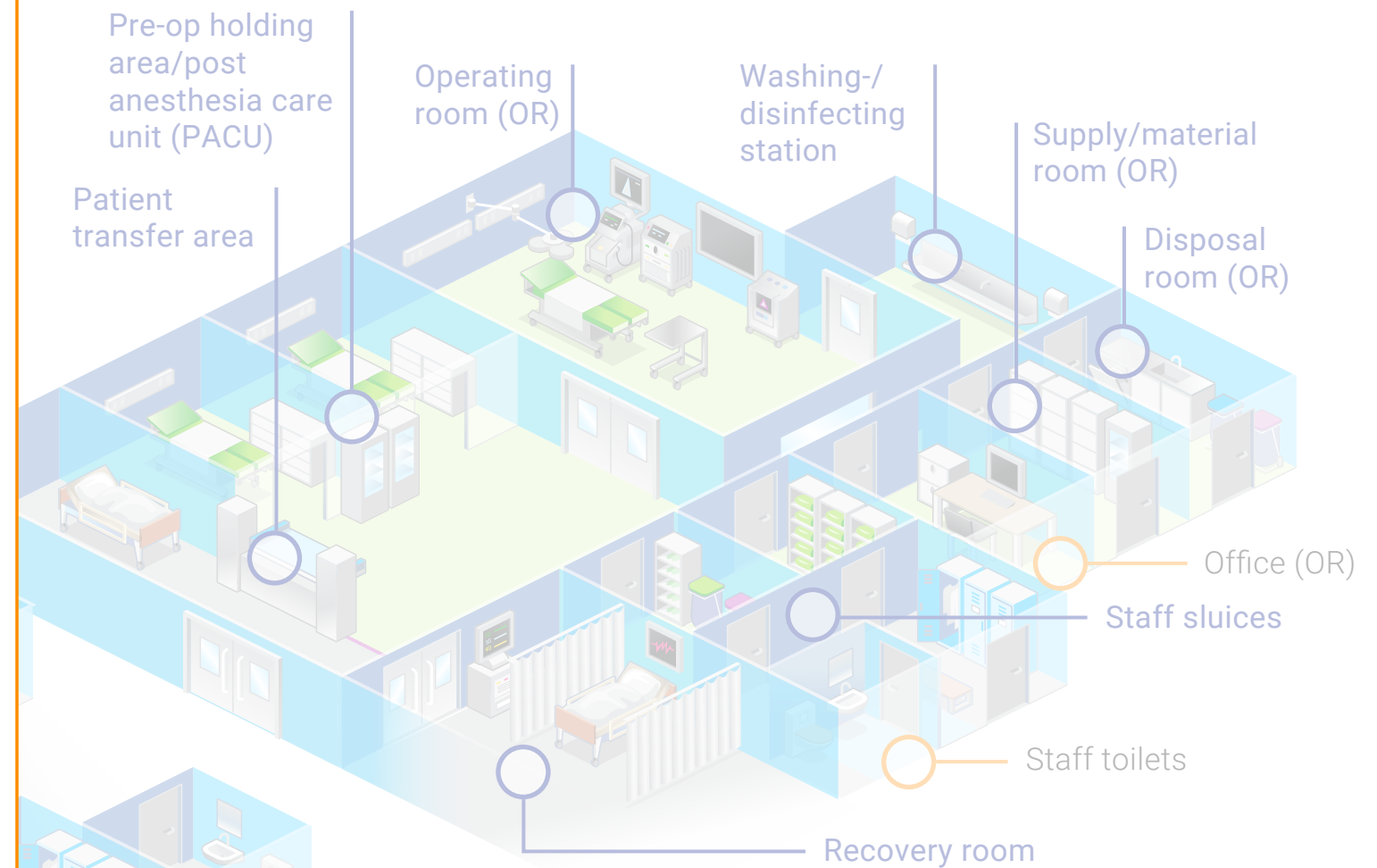
Staff room

Indications:

After patient contact

Dispenser recommendation:

Eurodispenser Safety Plus
BODE Eurodispenser 1 plus
Wallholder Plus (for lotion)



The "5 Moments for Hand Hygiene"

Placing our dispensers. The right place for the ward

Recommendations

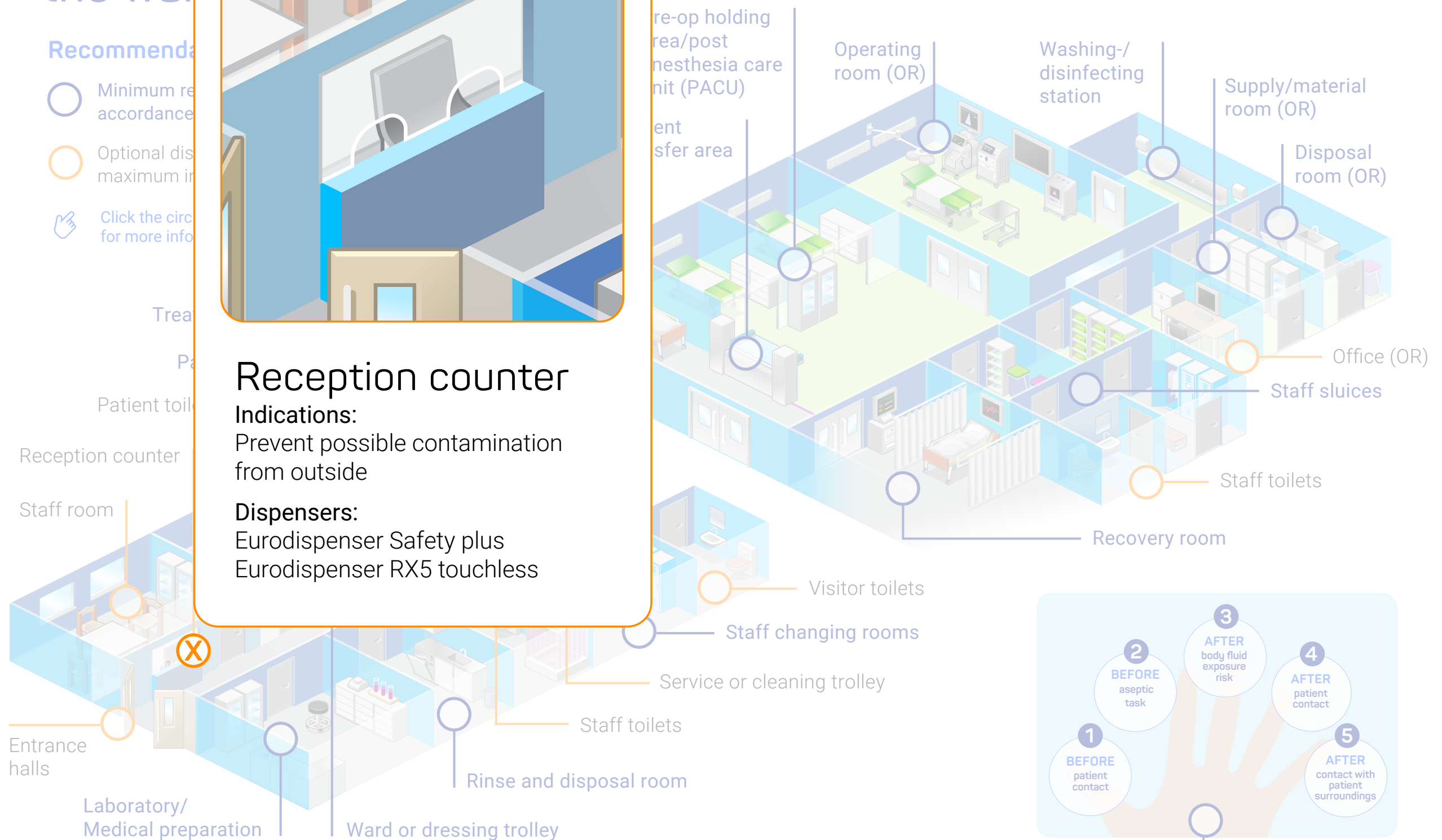
- Minimum recommended
- Optional dispenser maximum in
- Click the circle for more info



Reception counter

Indications:
Prevent possible contamination from outside

Dispensers:
Eurodispenser Safety plus
Eurodispenser RX5 touchless

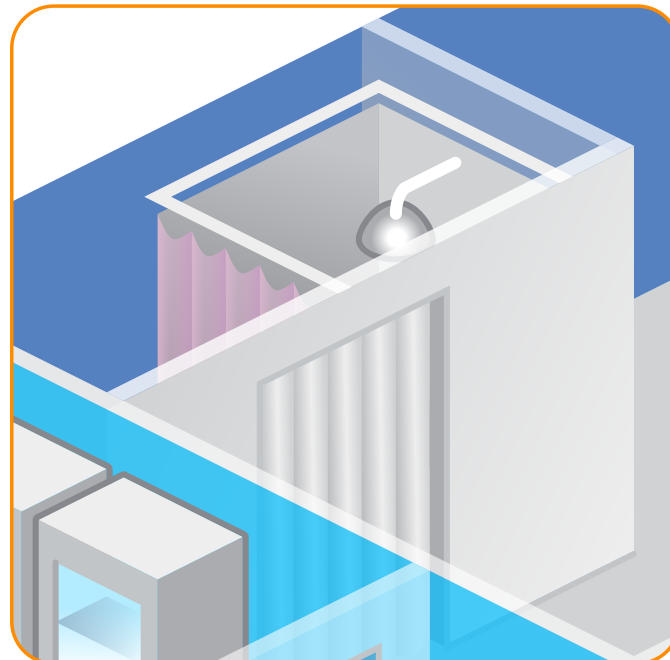


The "5 Moments for Hand Hygiene"

Placing our dispensers. The right dispenser for the ward and OR.

Recommendations for dispenser locations:

- Minimum req. accordance w
- Optional dispenser maximum info
- 👉 Click the circles for more inform



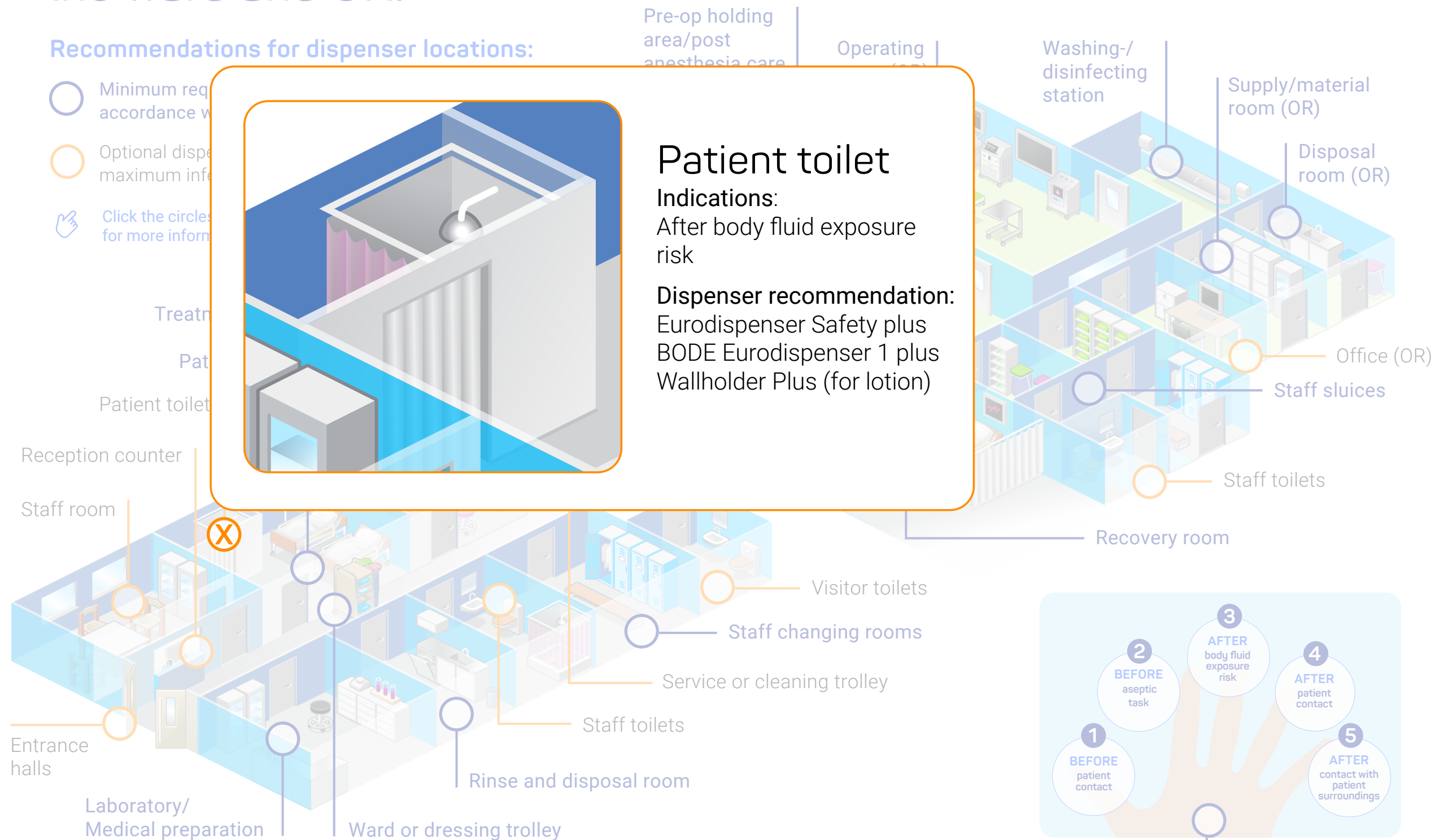
Patient toilet

Indications:

After body fluid exposure risk

Dispenser recommendation:

Eurodispenser Safety plus
BODE Eurodispenser 1 plus
Wallholder Plus (for lotion)



The "5 Moments for Hand Hygiene"

Placing our dispensers. The right dispenser for the ward and OR.

Recommendations for dispenser locations:

- Minimum requirements for placing dispensers in accordance with the "5"
- Optional dispenser location maximum infection protection
- 👉 Click the circles to enter/en for more information

Pre-op holding
area/post
anesthesia care
unit (PACU)

Operating
room (OR)

Washing-/
disinfecting
station

Supply/material
room (OR)

Disposal
room (OR)

Office (OR)

Staff sluices

Staff toilets

Recovery room

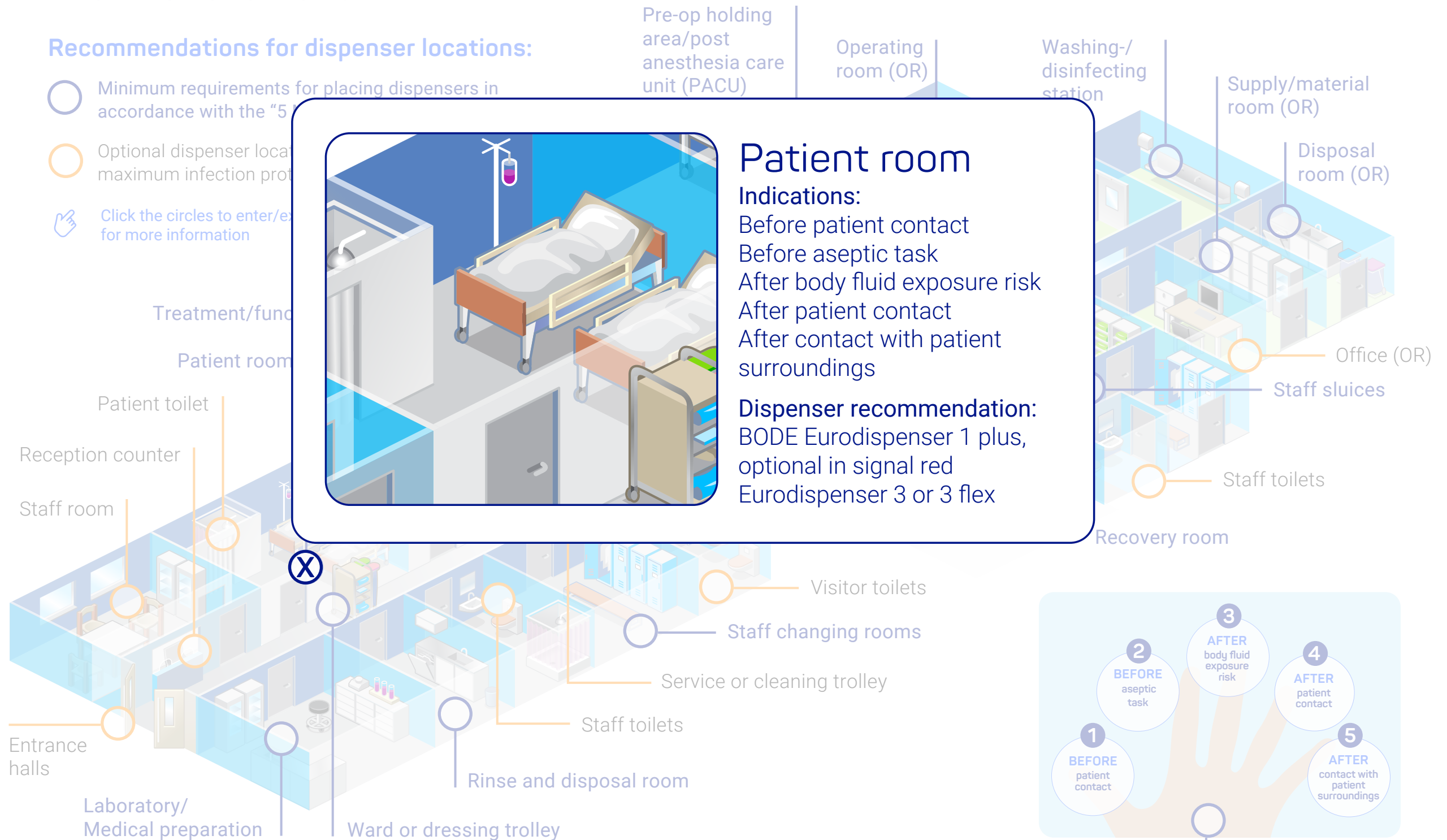
Patient room

Indications:

Before patient contact
Before aseptic task
After body fluid exposure risk
After patient contact
After contact with patient
surroundings

Dispenser recommendation:

BODE Eurodispenser 1 plus,
optional in signal red
Eurodispenser 3 or 3 flex



The "5 Moments for Hand Hygiene"



Placing our dispensers. The right dispenser for the ward and OR.

Recommendations for dispenser locations:

- Minimum requirements for placing dispensers in accordance with the "5 Moments for Hand Hygiene"
- Optional dispenser locations, recommended for maximum infection protection.
- Click the circles to enter/exit a location for more information

Pre-op holding
area/post

Operating I

Washing-/



Treatment/ functional room

Indications:

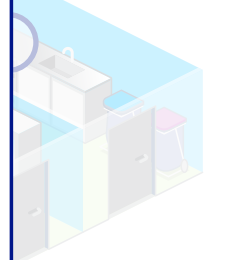
Before patient contact
Before aseptic task
After body fluid exposure risk
After patient contact

Dispenser recommendation:

BODE Eurodispenser 1 plus
Eurodispenser 3 flex

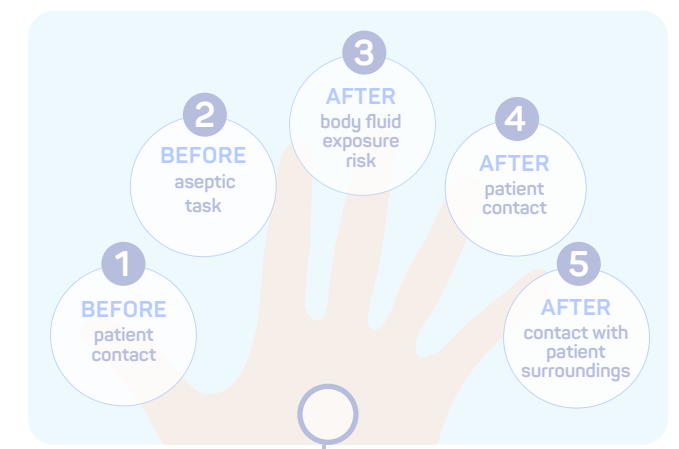
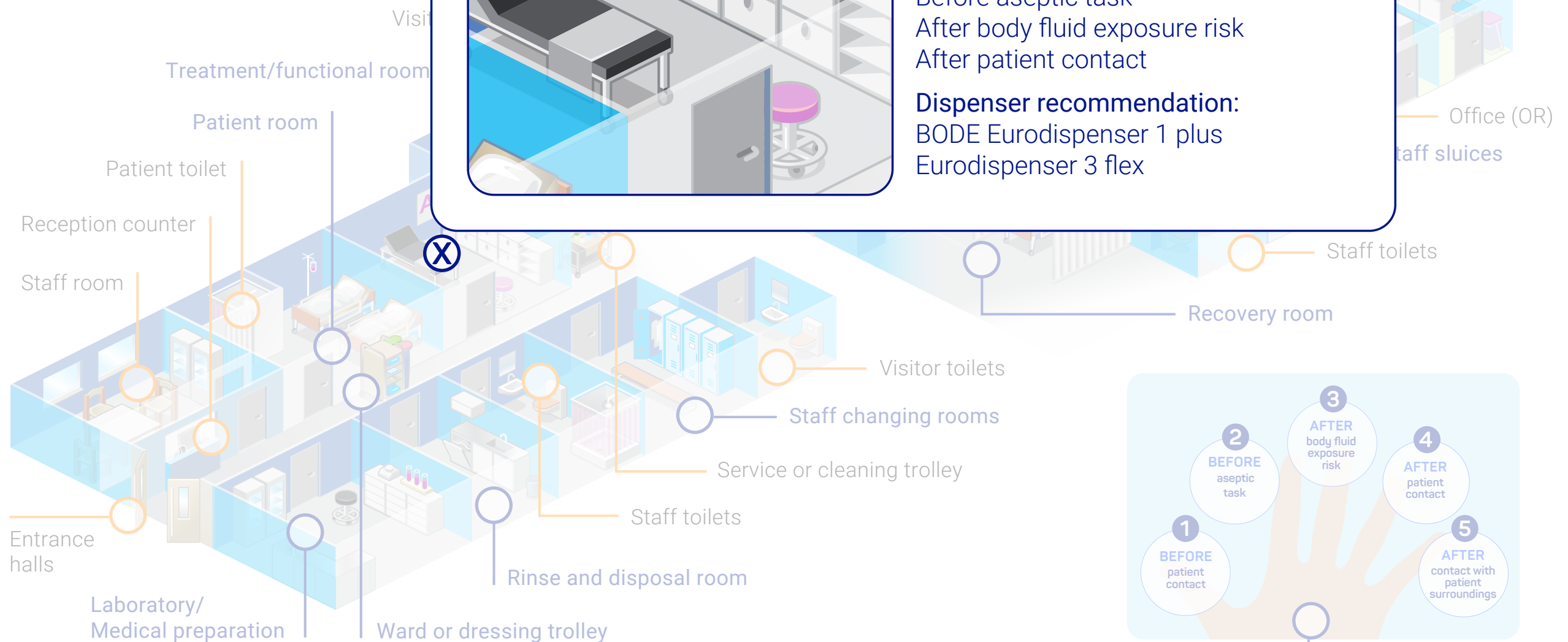
/material
(OR)

Disposal
room (OR)



Office (OR)

Staff sluices

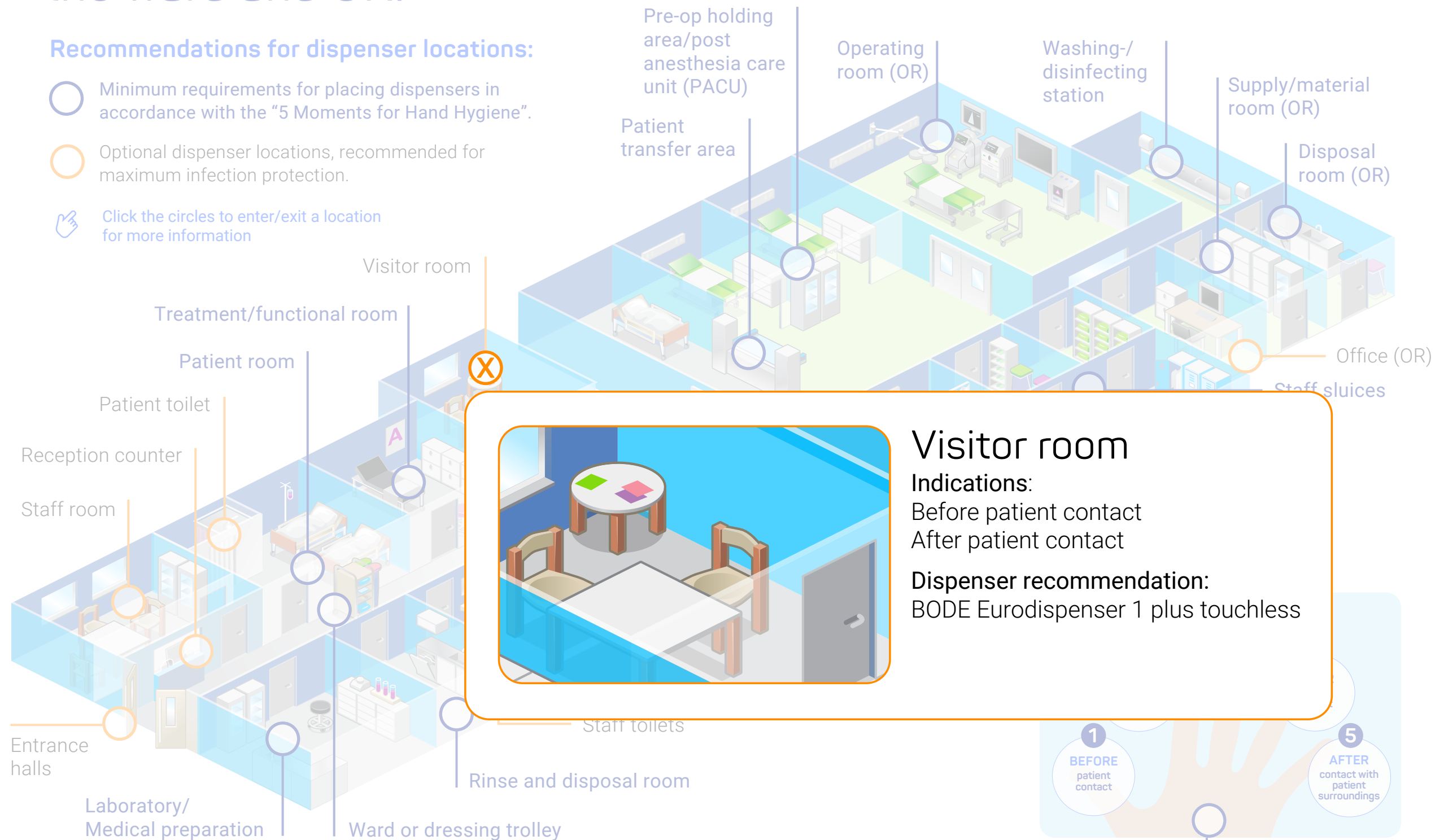


The "5 Moments for Hand Hygiene"

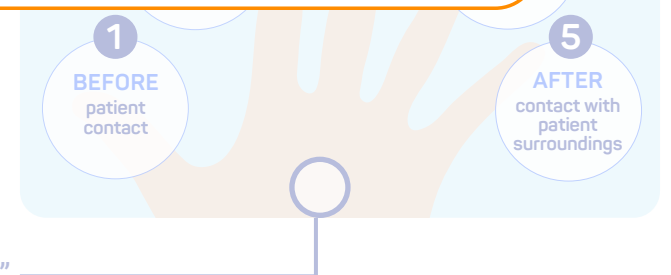
Placing our dispensers. The right dispenser for the ward and OR.

Recommendations for dispenser locations:

- Minimum requirements for placing dispensers in accordance with the "5 Moments for Hand Hygiene".
- Optional dispenser locations, recommended for maximum infection protection.
- 👉 Click the circles to enter/exit a location for more information



The "5 Moments for Hand Hygiene"



Placing our dispensers. The right dispenser for the ward and OR.

Recommendations for dispenser locations:

- Minimum requirements for placing dispensers in accordance with the "5 Moments for Hand Hygiene".
- Optional dispenser locations, recommended for maximum infection protection.
- 👉 Click the circles to enter/exit a location for more information



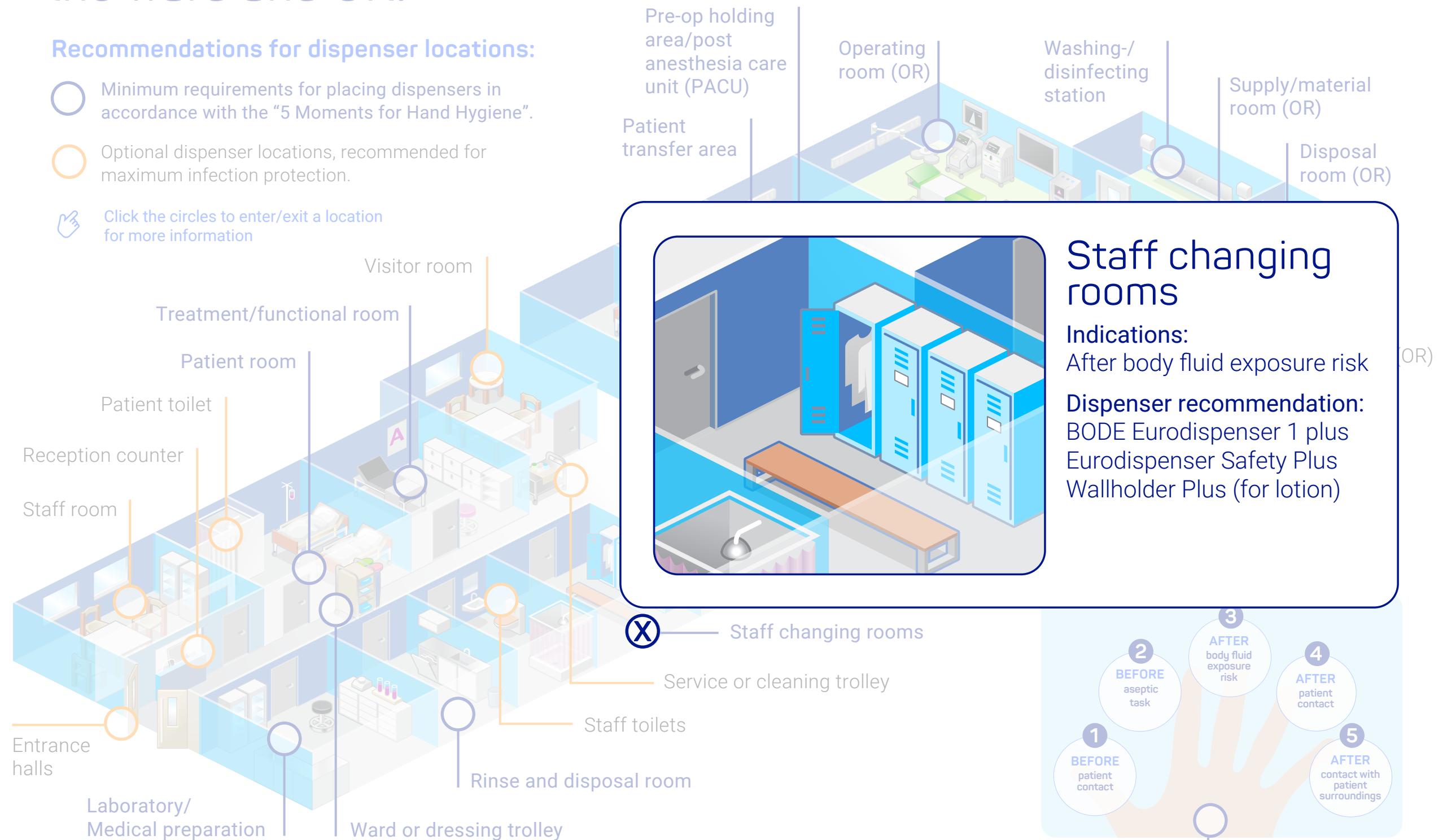
The "5 Moments for Hand Hygiene"



Placing our dispensers. The right dispenser for the ward and OR.

Recommendations for dispenser locations:

- Minimum requirements for placing dispensers in accordance with the "5 Moments for Hand Hygiene".
- Optional dispenser locations, recommended for maximum infection protection.
- 👉 Click the circles to enter/exit a location for more information



The "5 Moments for Hand Hygiene"

Placing our dispensers. The right dispenser for the ward and OR.

Recommendations for dispenser locations:

- Minimum requirement in accordance with local regulations
- Optional dispenser for maximum infection control
- Click the circles for more information



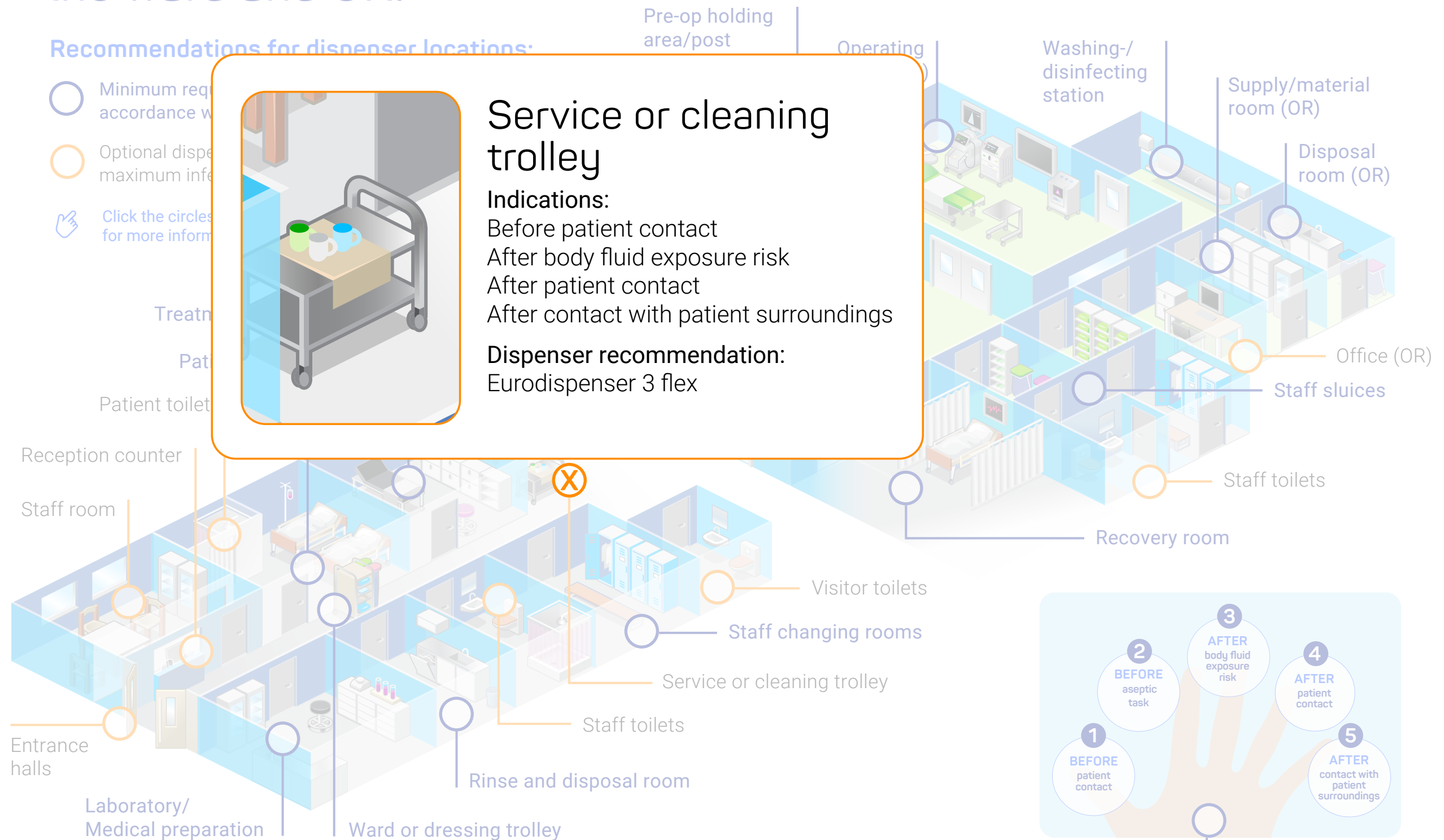
Service or cleaning trolley

Indications:

- Before patient contact
- After body fluid exposure risk
- After patient contact
- After contact with patient surroundings

Dispenser recommendation:




Eurodispenser 3 flex



The "5 Moments for Hand Hygiene"

Placing our dispensers. The right dispenser for the ward and OR.

Recommendations for dispenser locations:

-  Minimum requirements for placing dispensers in accordance with the "5 Moments for Hand Hygiene".
-  Optional dispenser locations, recommended for maximum infection protection.
-  Click the circles to enter/exit a location for more information

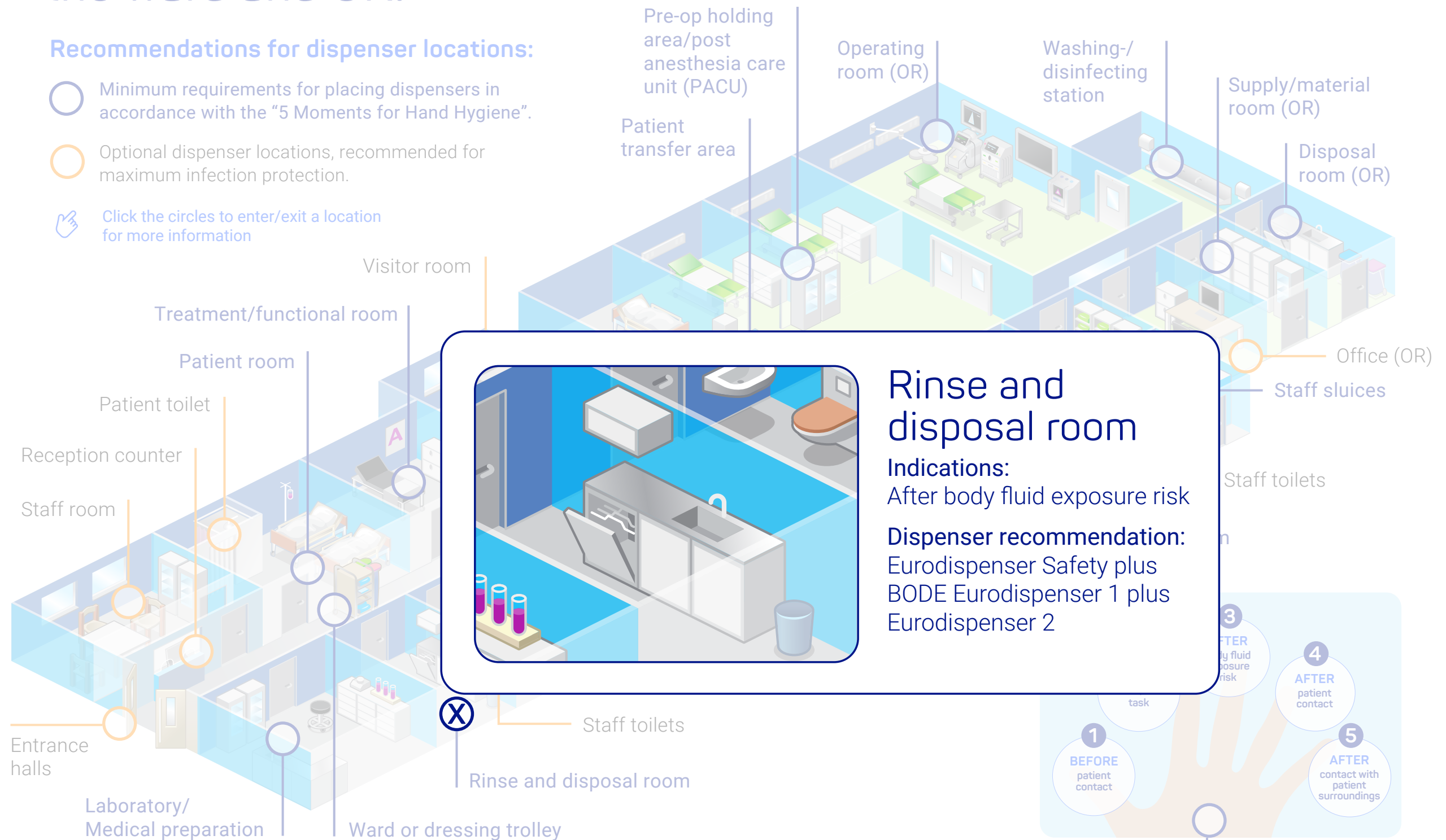


The "5 Moments for Hand Hygiene"

Placing our dispensers. The right dispenser for the ward and OR.

Recommendations for dispenser locations:

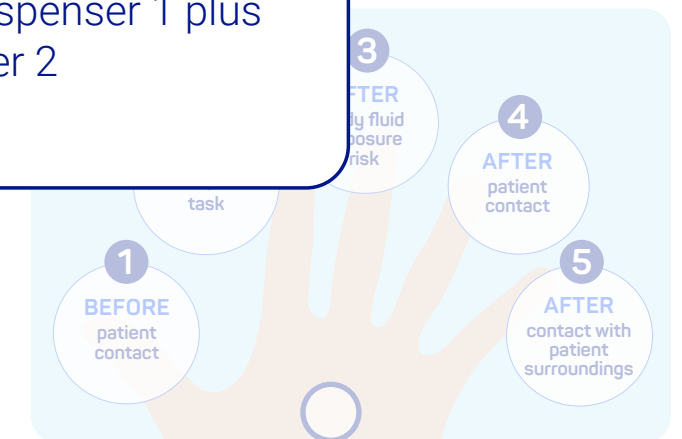
- Minimum requirements for placing dispensers in accordance with the "5 Moments for Hand Hygiene".
- Optional dispenser locations, recommended for maximum infection protection.
- 👉 Click the circles to enter/exit a location for more information



Rinse and disposal room

Indications:
After body fluid exposure risk

Dispenser recommendation:
Eurodispenser Safety plus
BODE Eurodispenser 1 plus
Eurodispenser 2



The "5 Moments for Hand Hygiene"

Placing our dispensers. The right dispenser for the ward and OR.

Recommendations for dispenser locations:

- Minimum requirements for placing dispensers in accordance with the "5 Moments for Hand Hygiene".
- Optional dispenser locations, recommended for maximum infection protection.
- 👉 Click the circles to enter/exit a location for more information



○ Minimum requirements for placing dispensers in accordance with the “5 Moments for Hand Hygiene”.

- Optional dispenser locations, recommended for maximum infection protection.

 Click the circles to enter/exit a location for more information



Indications:

Before antiseptic task
After body fluid exposure risk

Dispenser recommendation:
BODE Eurodispenser 1 plus
Eurodispenser Safety plus

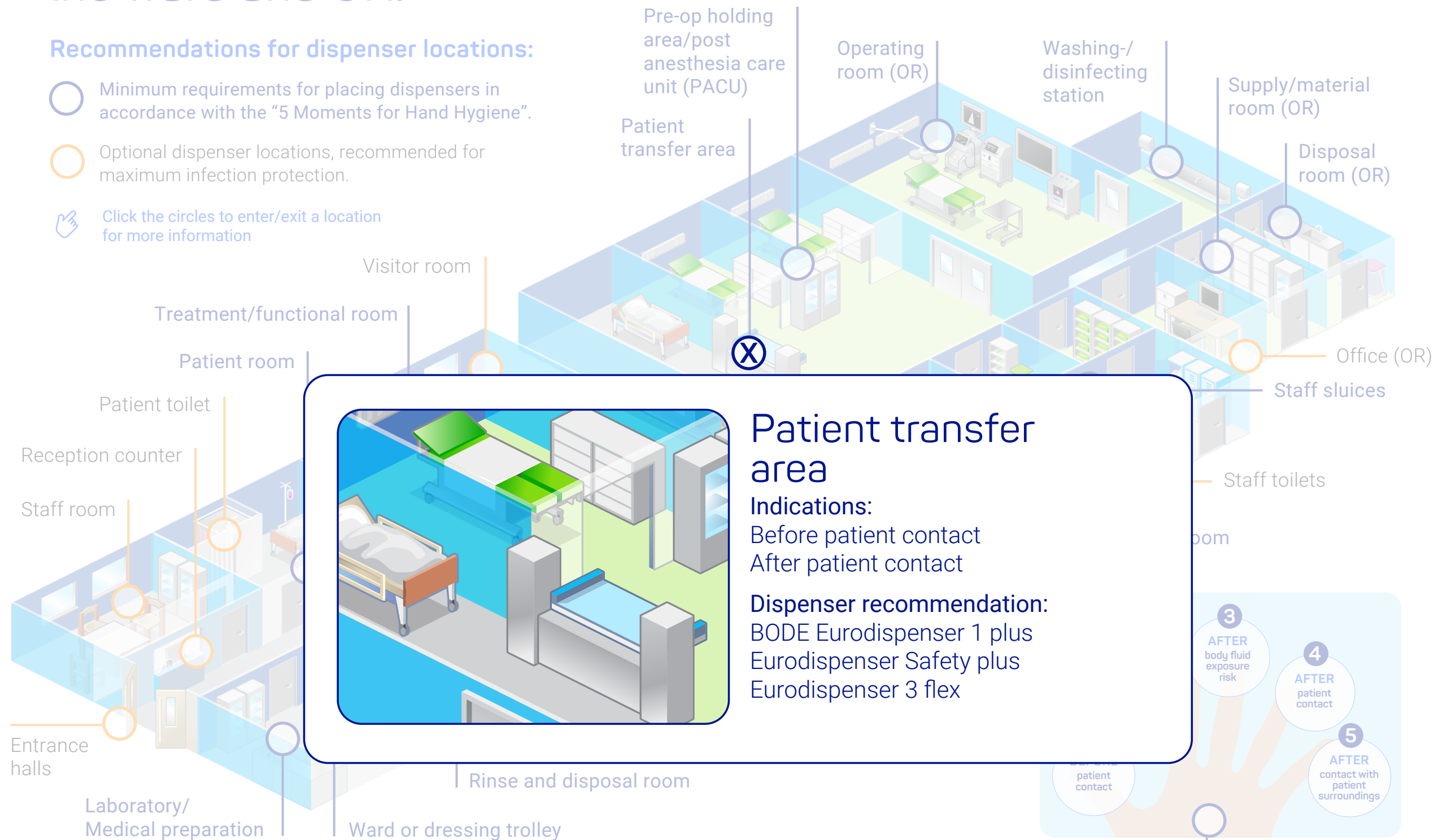


The “5 Moments for Hand Hygiene”

Placing our dispensers. The right dispenser for the ward and OR.

Recommendations for dispenser locations:

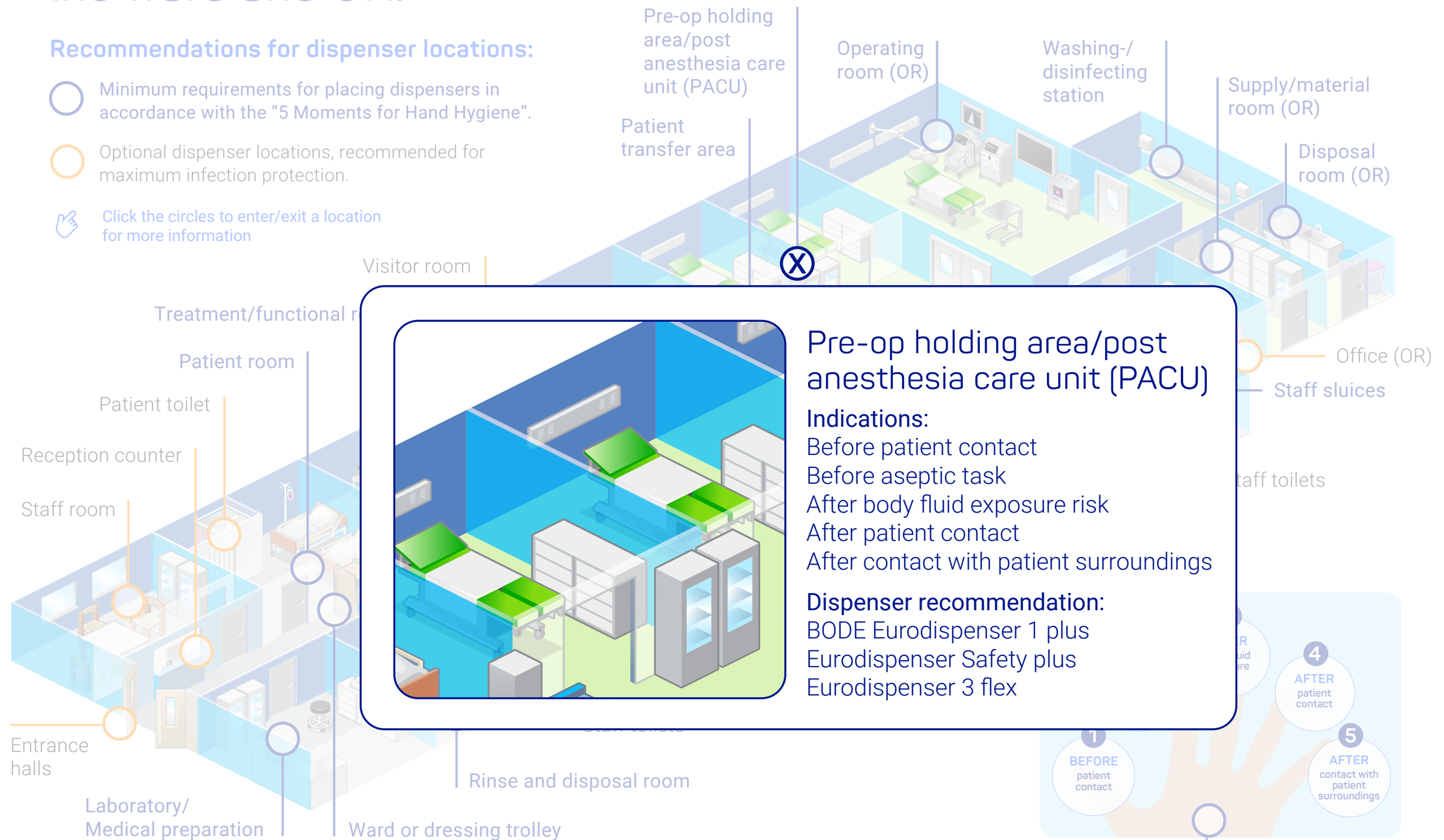
- Minimum requirements for placing dispensers in accordance with the "5 Moments for Hand Hygiene".
- Optional dispenser locations, recommended for maximum infection protection.
- 👉 Click the circles to enter/exit a location for more information



Placing our dispensers. The right dispenser for the ward and OR.

Recommendations for dispenser locations:

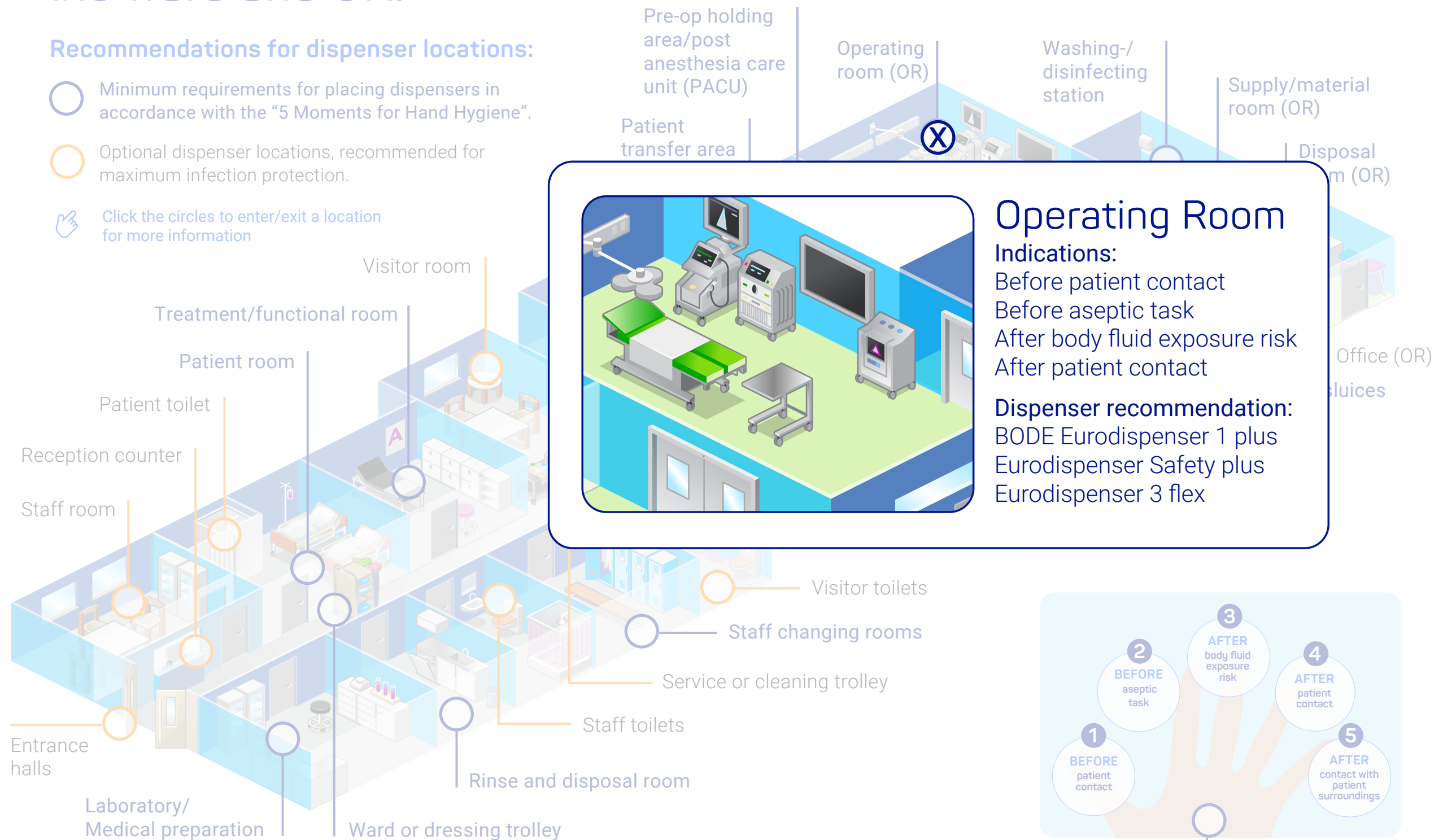
- Minimum requirements for placing dispensers in accordance with the "5 Moments for Hand Hygiene".
- Optional dispenser locations, recommended for maximum infection protection.
- 👉 Click the circles to enter/exit a location for more information



Placing our dispensers. The right dispenser for the ward and OR.

Recommendations for dispenser locations:

- Minimum requirements for placing dispensers in accordance with the "5 Moments for Hand Hygiene".
- Optional dispenser locations, recommended for maximum infection protection.
- 👉 Click the circles to enter/exit a location for more information



The "5 Moments for Hand Hygiene"

Placing our dispensers. The right dispenser for the ward and OR.

Recommendations for dispenser locations:

- Minimum requirements for placing dispensers in accordance with the "5 Moments for Hand Hygiene".
- Optional dispenser locations, recommended for maximum infection protection.
- 👉 Click the circles to enter/exit a room for more information



The "5 Moments for Hand Hygiene"

Placing our dispensers. The right dispenser for the ward and OR.

Recommendations for dispenser locations:

- Minimum requirements for placing dispensers in accordance with the "5 Moments for Hand Hygiene".
- Optional dispenser locations, recommended for maximum infection protection.
- 👉 Click the circles to enter/exit a location for more information

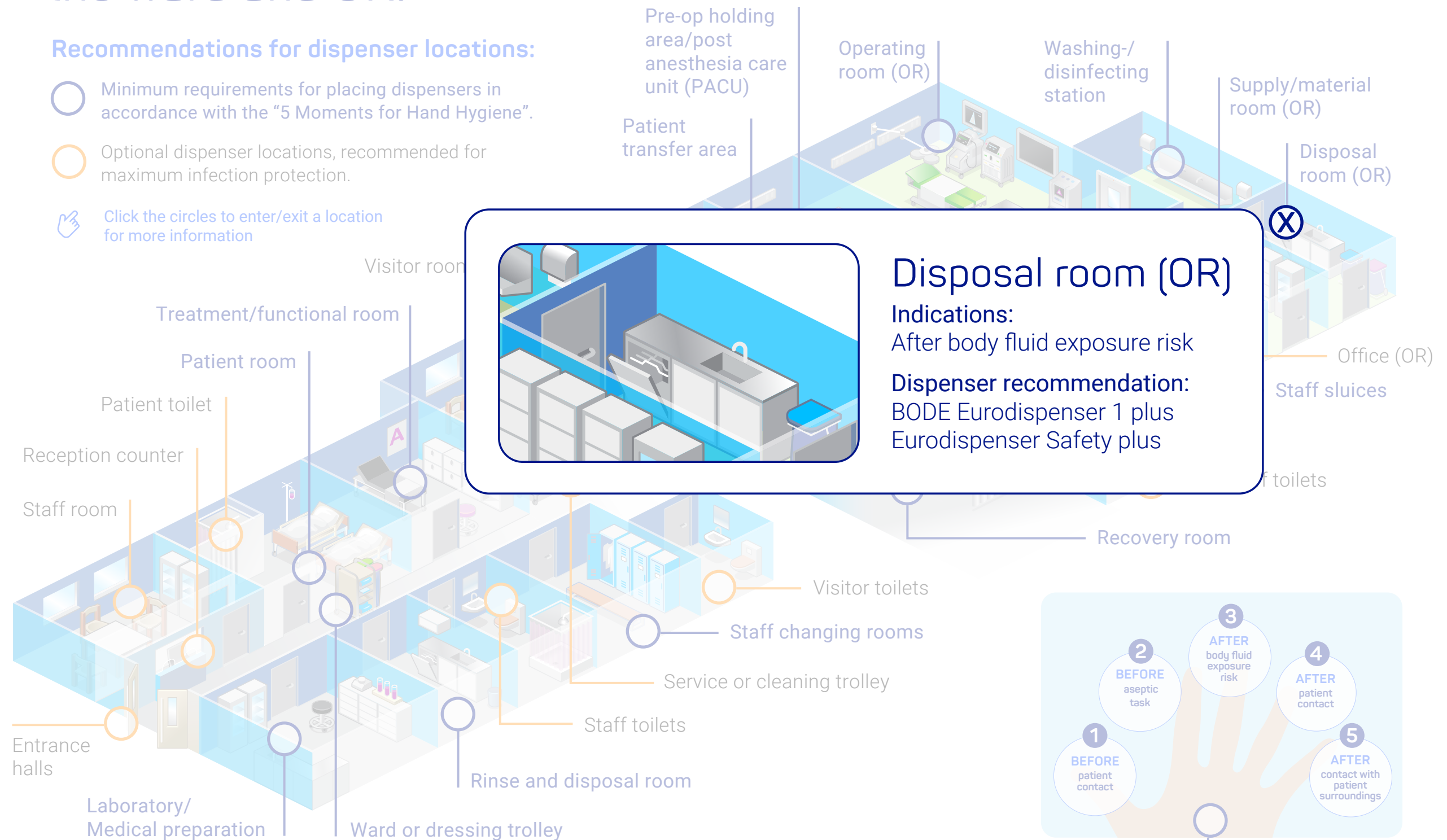


The "5 Moments for Hand Hygiene"

Placing our dispensers. The right dispenser for the ward and OR.

Recommendations for dispenser locations:




- Minimum requirements for placing dispensers in accordance with the "5 Moments for Hand Hygiene".
- Optional dispenser locations, recommended for maximum infection protection.
- 👉 Click the circles to enter/exit a location for more information

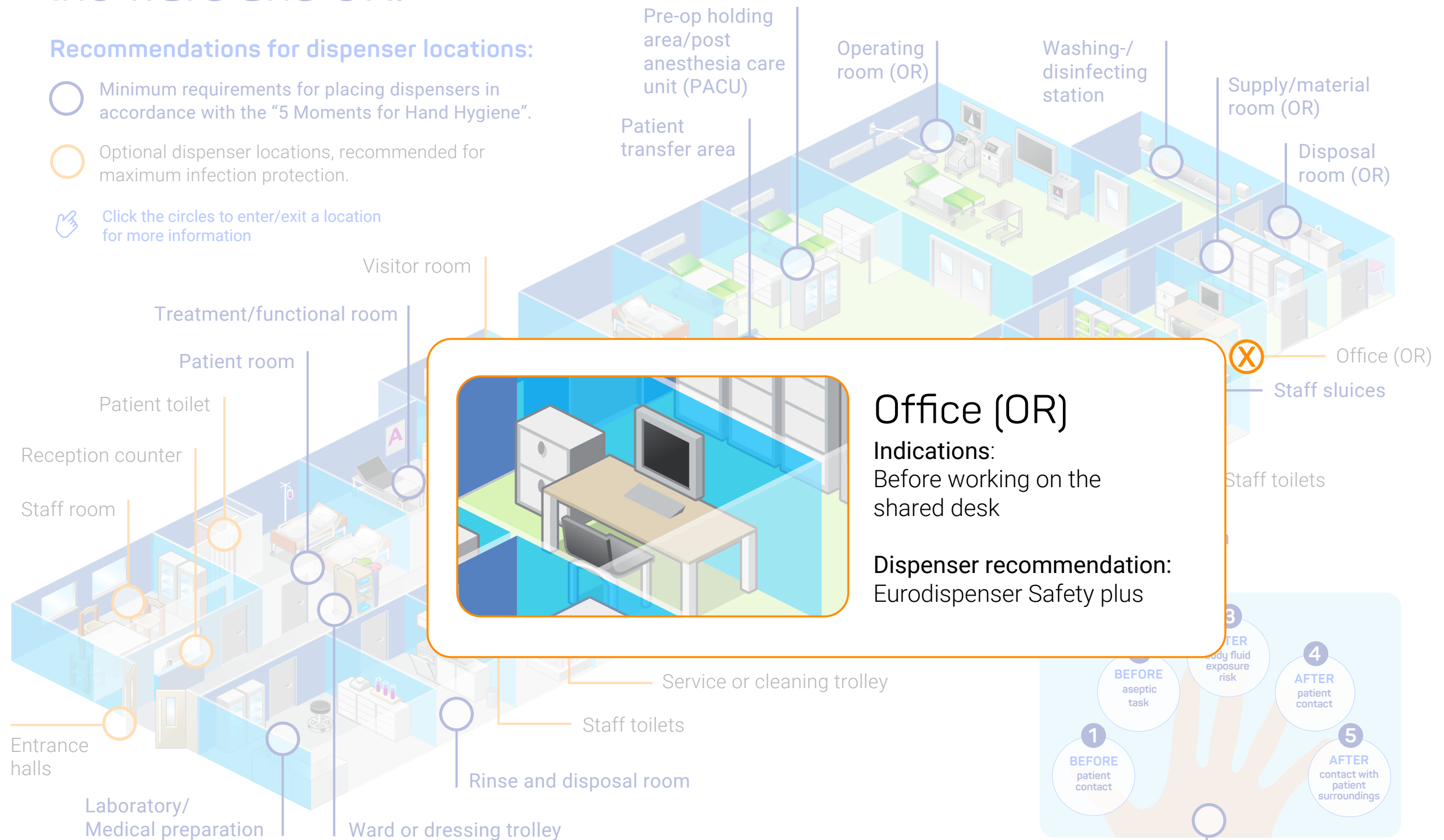


The "5 Moments for Hand Hygiene"

Placing our dispensers. The right dispenser for the ward and OR.

Recommendations for dispenser locations:

-  Minimum requirements for placing dispensers in accordance with the "5 Moments for Hand Hygiene".
-  Optional dispenser locations, recommended for maximum infection protection.
-  Click the circles to enter/exit a location for more information



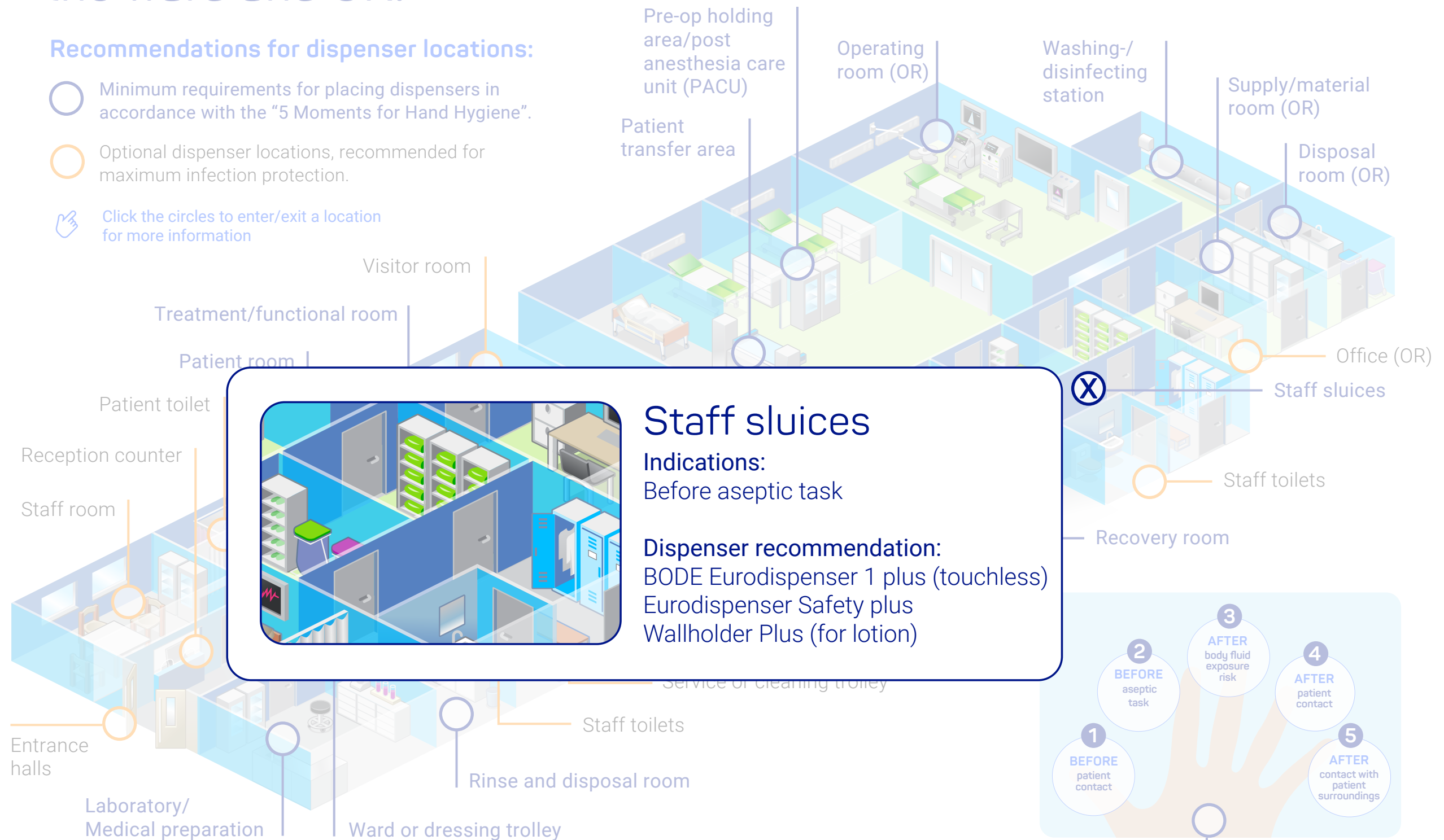
The "5 Moments for Hand Hygiene"



Placing our dispensers. The right dispenser for the ward and OR.

Recommendations for dispenser locations:

- Minimum requirements for placing dispensers in accordance with the "5 Moments for Hand Hygiene".
- Optional dispenser locations, recommended for maximum infection protection.
- 👉 Click the circles to enter/exit a location for more information



Staff sluices

Indications:

Before aseptic task

Dispenser recommendation:




BODE Eurodispenser 1 plus (touchless)
Eurodispenser Safety plus
Wallholder Plus (for lotion)

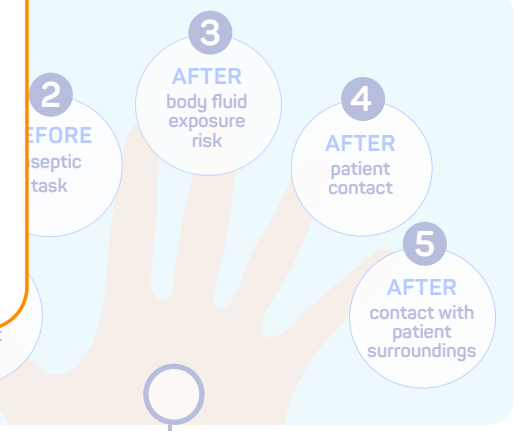
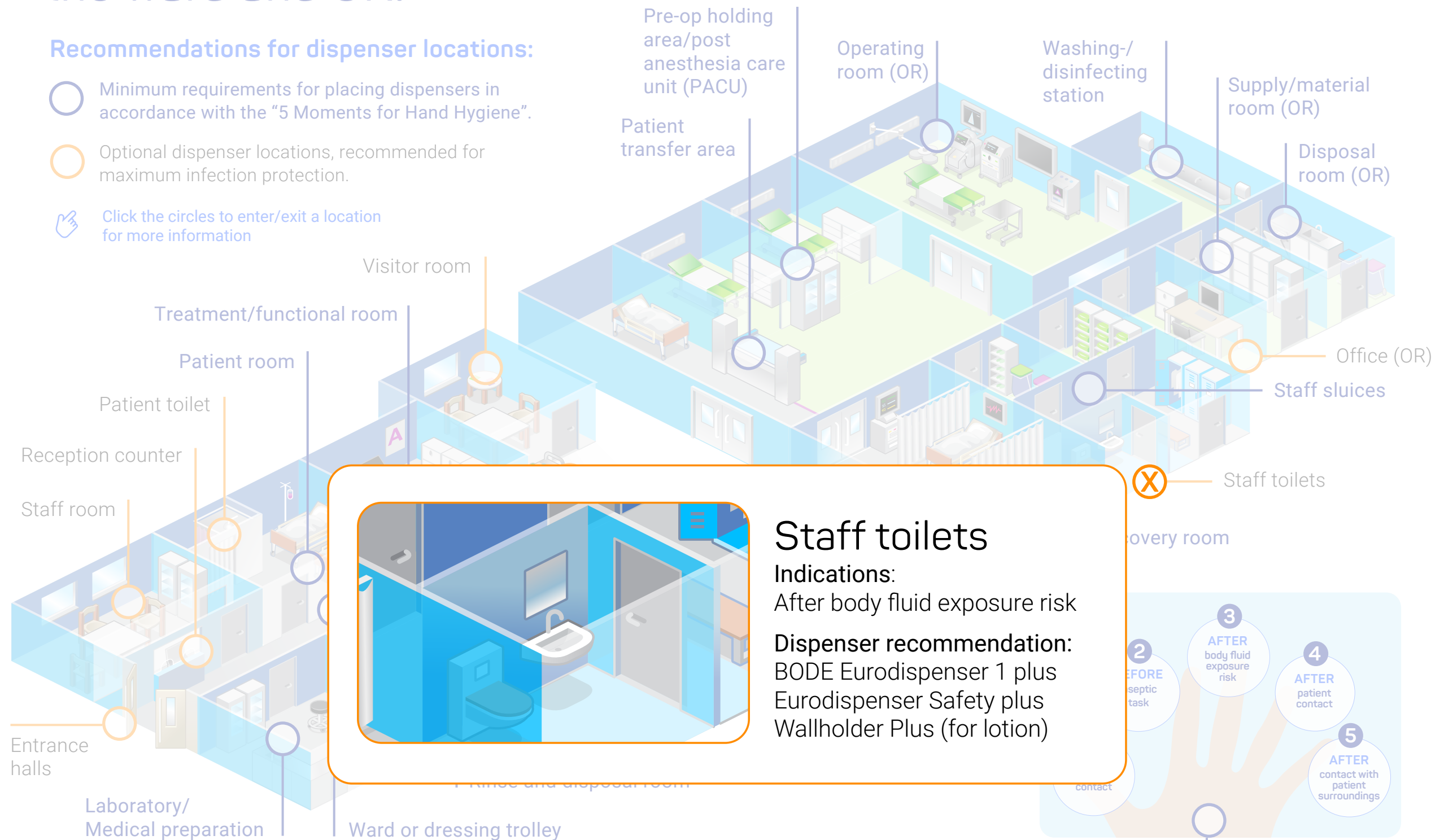


The "5 Moments for Hand Hygiene"

Placing our dispensers. The right dispenser for the ward and OR.

Recommendations for dispenser locations:

-  Minimum requirements for placing dispensers in accordance with the "5 Moments for Hand Hygiene".
-  Optional dispenser locations, recommended for maximum infection protection.
-  Click the circles to enter/exit a location for more information

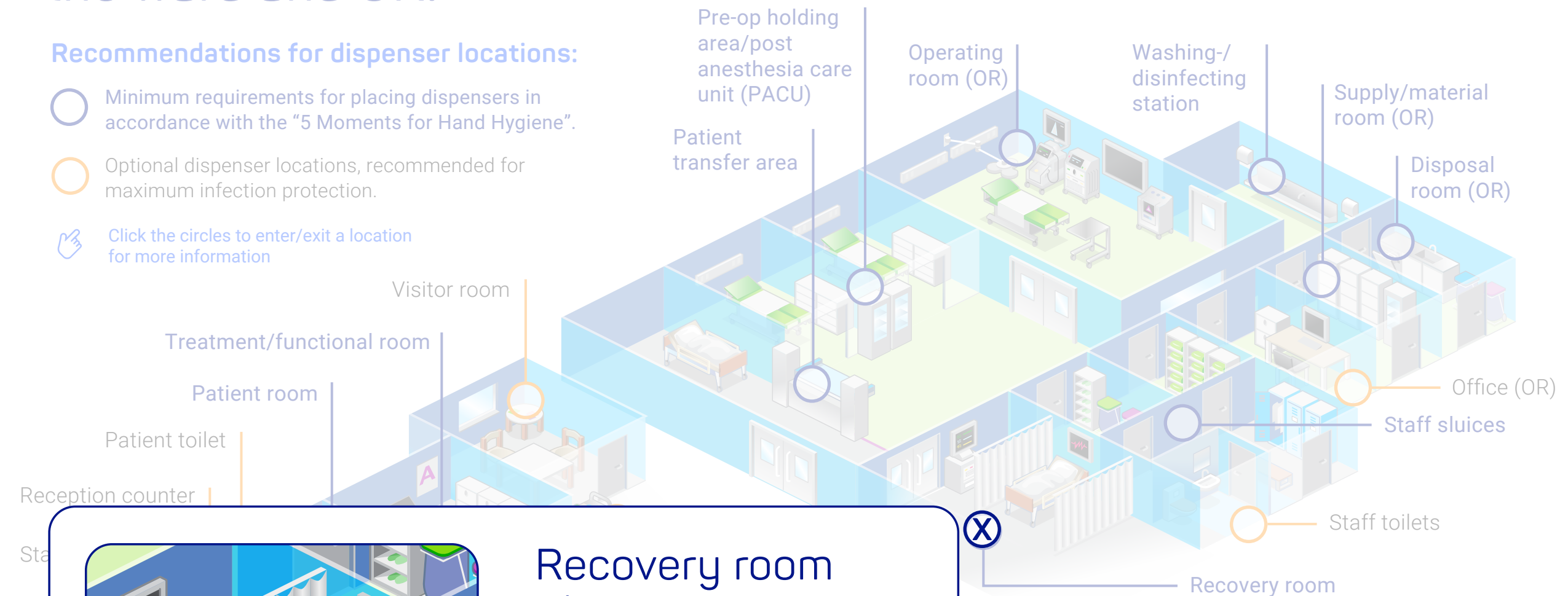


The "5 Moments for Hand Hygiene"

Placing our dispensers. The right dispenser for the ward and OR.

Recommendations for dispenser locations:

- Minimum requirements for placing dispensers in accordance with the "5 Moments for Hand Hygiene".
- Optional dispenser locations, recommended for maximum infection protection.
- 👉 Click the circles to enter/exit a location for more information



Recovery room

Indications:

- Before patient contact
- Before aseptic task
- After body fluid exposure risk
- After patient contact

Dispenser recommendation:

BODE Eurodispenser 1 plus
Eurodispenser Safety plus
Eurodispenser 3 flex



The "5 Moments for Hand Hygiene"

Placing our dispensers. The right dispenser for the ward and OR.

Recommendations for dispenser locations:

- Minimum requirements for placing dispensers in accordance with
- Optional dispenser locations (maximum 10m from the hand hygiene point)
- 👉 Click the circle for more information

Pre-op holding area/post anesthesia care unit (PACU)

Operating room (OR)

Washing-/disinfecting station

Supply/material room (OR)

Disposal room (OR)

Office (OR)

Staff sluices

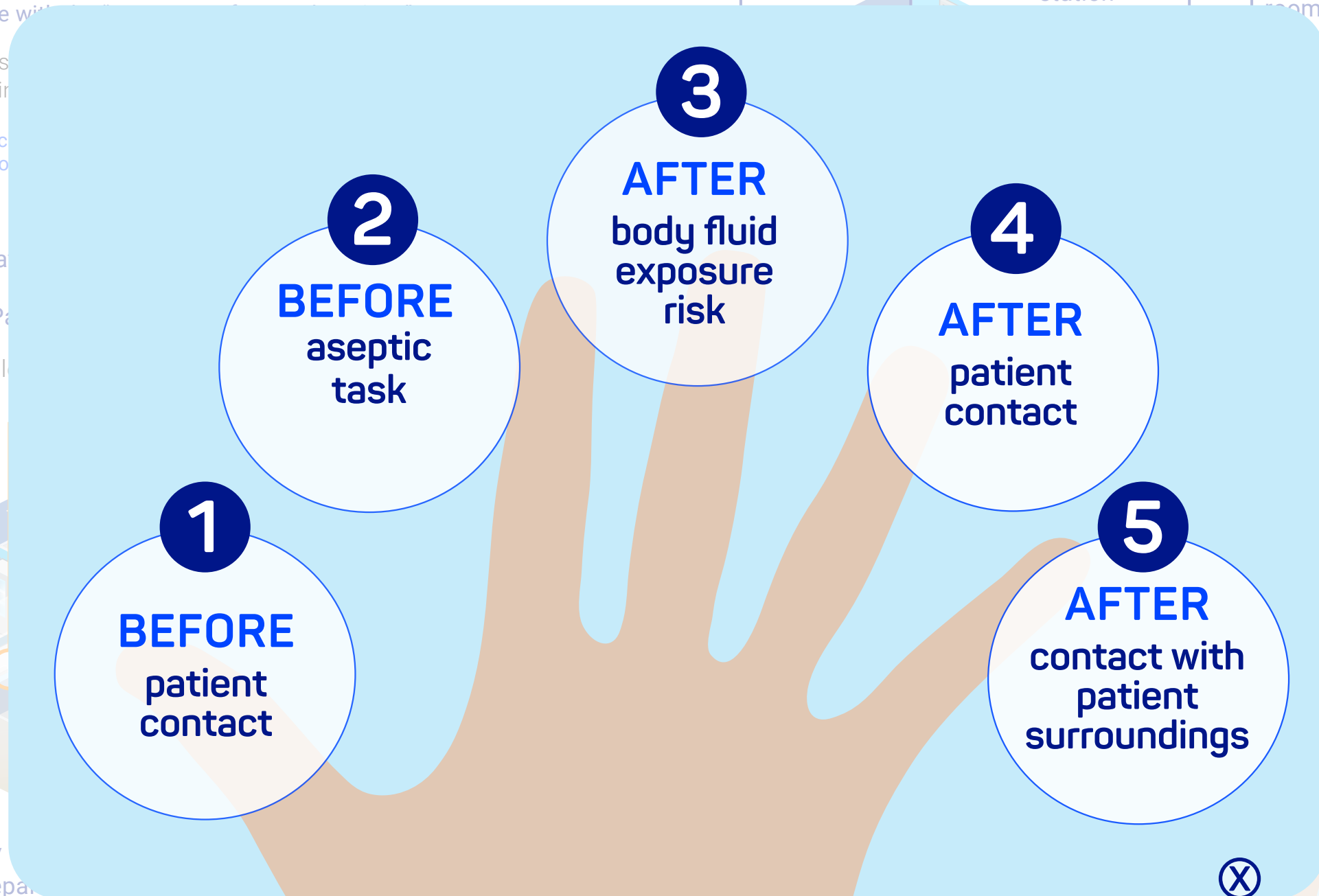
Toilets

Reception counter

Staff room

Entrance halls

Laboratory/
Medical preparation



The "5 Moments for Hand Hygiene"