

HARTMANN



Always on the spot

Perfect dispenser infrastructure
with HARTMANN



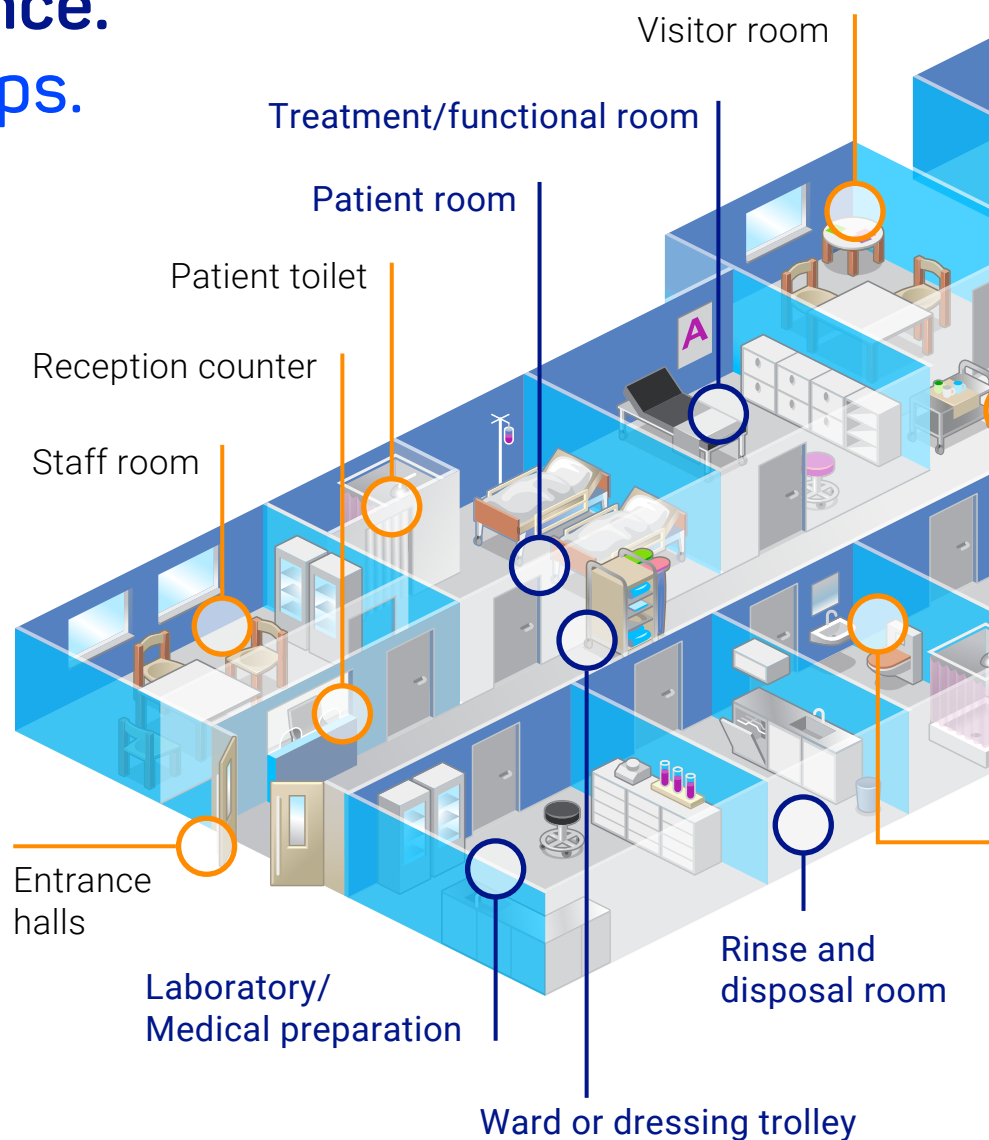


Better compliance. At your fingertips.


Optimal availability of dispensers eases compliance with hand hygiene indications.


Dispensers ensure the availability of hand disinfectants, their hygienic dispensing and correct dosing. Best hand hygiene results are achieved, when the dispensers locations are selected following the WHO's 5 moments for hand hygiene: two „BEFORE“ and three „AFTER“ indications.

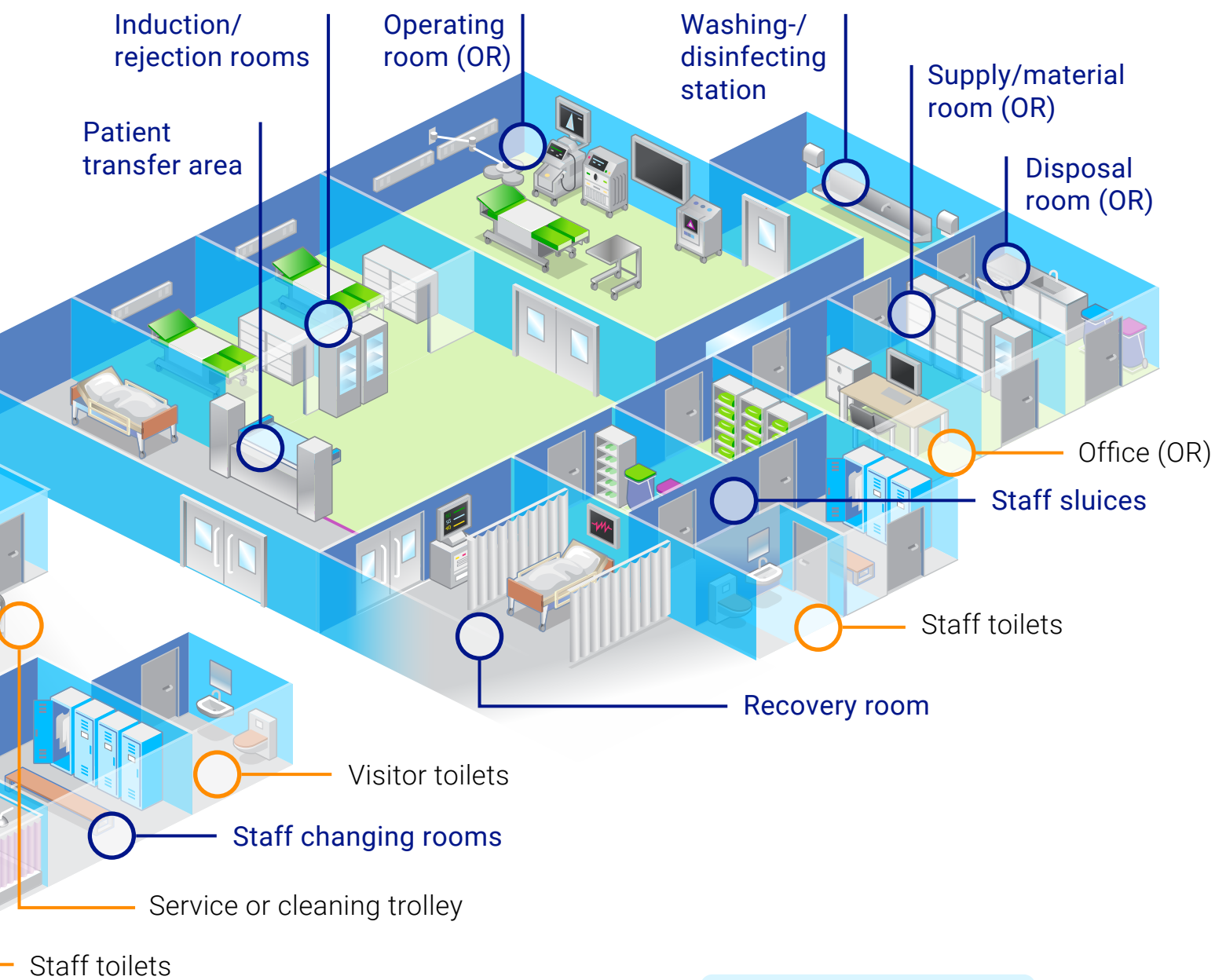
Most indications for hand disinfection happen at the “Point of Care”, i.e. where patient and staff meets. Near-patient placement of dispensers covers many indications for hand disinfection and is imperative for patient safety.



Recommendations for dispenser locations:

 Minimum requirements for placing dispensers in accordance with the “5 Moments for Hand Hygiene”.

 Optional dispenser locations, recommended for maximum infection protection.

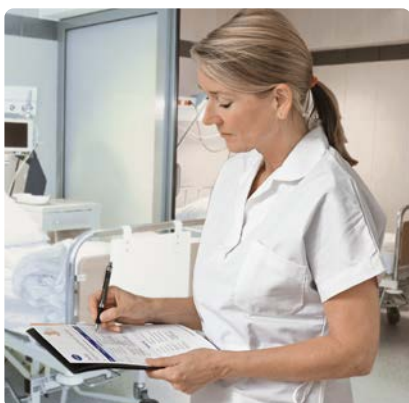


For detailed information and explanation please have a look at the animated dispenser placement.





Ideal dispenser placement. With the HARTMANN checklists.



Check the availability now.

Those, who ensure that dispensers and hand disinfectants are immediately available in moments involving infection risks, can reduce infection rates.

Put dispensers in ideal places.

With the HARTMANN checklists for dispenser placement, you are on the safe side. The dispenser locations are directly attributed to the "5 Moments for hand hygiene" to ensure the availability of hand disinfectants in situations requiring hand disinfection. For more efficiency and improved patient protection.

Checklist

Placement of hand disinfectant dispensers in the **operating room** / REQUIRED

Date _____ Department/Ward/Functional area _____

Location	Why? Attribution of 5 moments
Operating room (OR)	1. Before patient contact
Patient transfer area	1. Before patient contact
Recovery room	1. Before patient contact
Operating room (OR)	1. Before patient contact
Washing/disinfecting station	2. Before patient contact
Staff sluices	2. Before patient contact
Pre-op holding area/post anesthesia care unit (PACU)	1. Before patient contact
Supply/material room (OR)	2. Before patient contact
Disposal room (OR)	3. After body fluid exposure risk
Patient transfer area	1. Before patient contact

Other locations

Location	Why? Attribution of 5 moments	Examples
Entrance halls		> prevent possible infection
Staff room	4. After patient contact	> direct body contact, pause, before patient contact
Reception counter		> prevent possible infection
Patient toilet	3. After body fluid exposure risk	> using toilet
Visitor room	1. Before patient contact	> protection of patient
Visitor toilets	3. After body fluid exposure risk	> using toilet
Service or cleaning trolley	1. Before patient contact	> direct body contact, cleaning faeces, etc.
	3. After body fluid exposure risk	> direct body contact, cleaning faeces, etc.
	4. After patient contact	> direct body contact, cleaning faeces, etc.
	5. After contact with patient surroundings	> direct body contact, cleaning faeces, etc.
Staff toilets	3. After body fluid exposure risk	> using toilet

Checklist

Placement of hand disinfectant dispensers in the **hospital ward** / REQUIRED

Date _____ Department/Ward/Functional area _____

Location	Why? Attribution of 5 moments	Examples	Available	
			Yes	No
Next to the door	1. Before patient contact			
Point of care, one dispenser per patient bed (ICU)	4. After patient contact	> direct body contact, measurement of vital functions, patient care		
OR	1. Before patient contact	> direct body contact		
Point of care, one dispenser per two beds (normal ward)	2. Before aseptic task	> direct body contact, measurement of vital functions, patient care		
	3. After body fluid exposure risk	> connection/disconnection of invasive devices; when moving from a colonised/contaminated body site to a clean body site during patient care		
	4. After patient contact	> removal of a dressing, removal of gloves		
	5. After contact with patient surroundings	> direct body contact		
Treatment/functional room		> contact with surfaces and medical devices in the immediate surroundings of the patient		
Next to the door	1. Before patient contact			
Right next to treatment zones	4. After patient contact	> direct body contact, measurement of vital functions, physical examination		
	1. Before patient contact	> direct body contact		
	2. Before aseptic task	> direct body contact, measurement of vital functions, physical examination		
	3. After body fluid exposure risk	> placing a peripheral venous catheter		
	4. After patient contact	> taking of a blood sample, removal of a dressing		
Staff changing rooms		> direct body contact, measurement of blood glucose or blood pressure		
Next to the door	3. After body fluid exposure risk			
Rinse and disposal room		> changing of work clothing		
Right next to workspaces	3. After body fluid exposure risk			
Ward or dressing trolley		> reprocessing of bed pans		
Point of care, on the trolley	1. Before patient contact			
	2. Before aseptic task	> direct body contact		
	3. After body fluid exposure risk	> tracheotomy care		
	4. After patient contact	> removal of a dressing		
	5. After contact with patient surroundings	> direct body contact, pulmonary auscultation		
Laboratory/Medical preparation		> contact with blood pressure kits		
Right next to workspaces	2. Before aseptic task			
	3. After body fluid exposure risk	> preparation of medications		
		> for swab tests, independent of whether gloves are worn or not		

Placement of hand disinfectant dispensers in the **hospital ward** / OPTIONAL > (2)

5 Moments for hand hygiene

BEFORE patient contact

HARTMANN

Helps. Cares. Protects.

(08.22)

Disinfectant dispenser: placement

A study identified two particularly decisive factors for dispenser placement: installation near the door of patient rooms and good visibility of the disinfectant dispenser. Standardisation of the dispenser position also correlated with compliance [1].

Another study found that daily disinfectant consumption increased significantly after dispensers were placed in conspicuous positions and close to patients [2].

The availability and easy accessibility of disinfectant is a prerequisite for indication-appropriate hand disinfection. Sensible dispenser placement has a positive effect on hand hygiene compliance.

References:
1 Cure L, Van Enk R. V. (2015) Am J Infect Control 43(9):917-21.
2 Thomas BW et al. (2009) J Am Osteop Ass 109 (5): 263-267.

www.hartmann-science-center.com

PAUL HARTMANN AG
Paul-Hartmann-Straße 12
89522 Heidenheim
Germany

Phone: +49-7321-36-0
Fax: +49-7321-36-3636
info@hartmann.info
www.hartmann.info

HARTMANN

Helps. Cares. Protects.

(08.22)

Detailed recommendations on the placement of dispensers in different ward areas or functional spaces.

Fields to indicate whether a dispenser is already installed and a counter function is available.

Attribution of the dispensers to the "5 Moments for hand hygiene". Indications are explained by examples.

Disinfectant dispenser: placement is crucial

A study identified two particularly decisive factors for dispenser placement: installation near the door of patient rooms and good visibility of the disinfectant dispenser. Standardisation of the dispenser position also correlated with compliance [1].

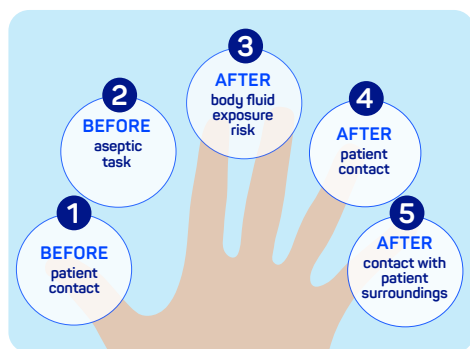


Another study found that daily disinfectant consumption increased significantly after dispensers were placed in conspicuous positions and close to patients [2].

The availability and easy accessibility of disinfectant is a prerequisite for indication-appropriate hand disinfection. Sensible dispenser placement has a positive effect on hand hygiene compliance.

References:
1 Cure L, Van Enk R. V. (2015) Am J Infect Control 43(9):917-21.
2 Thomas BW et al. (2009) J Am Osteop Ass 109 (5): 263-267.

Always in the right place – the Eurodispenser 3 flex



The "5 Moments for Hand Hygiene"

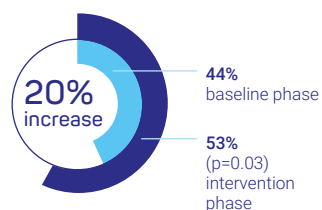
1. Thomas BW *et al.* (2009) Journal of the American Osteopathic Association 109 (5): 263-267.
2. Chan B *et al.* (2013) Infect Control Hosp Epidemiol 34 (9): 987-989.

WHO moment	Why?	When?	Location of Eurodispenser 3 flex
BEFORE patient contact	To protect patients against the transmission of pathogens via the hands of staff	For example, before personal hygiene, measurement of vital functions, physical examination	Bed frame Dressing and treatment trolleys Ward trolley
BEFORE aseptic task	To protect the patient against the entry of pathogens, including her/his own, into sterile/non-colonised body areas	For example, before catheter manipulation, when moving from a colonised/contaminated body site to a clean body site during patient care, before changing a dressing	
AFTER body fluid exposure risk	To protect the patient when moving from colonised/contaminated body sites to a clean body sites and vice versa. To protect subsequent patients	For example, when changing a dressing, after hygiene	
AFTER patient contact	To protect patients against the transmission of pathogens via the hands of staff	For example, after measurement of blood pressure	Rail Shelf system Bedside table Wall supply unit Ceiling supply unit Incubators
AFTER contact with patient surroundings	To protect subsequent patients	For example, after contact with surfaces and medical devices in the immediate surroundings of the patient	Monitor workstation

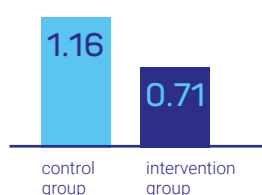
Intervention study

by Charité Berlin with active participation of HARTMANN SCIENCE CENTER

The successful multimodal intervention study at the Charité used the Eurodispenser 3 flex, HARTMANN SOPs, training videos and the Observe app. The cluster randomized, two-arm study focussed on improving hand hygiene compliance before aseptic procedures/activities as well as reducing blood stream infections.



Hand hygiene compliance before aseptic tasks



Blood stream infections per 1000 patient days in the intervention phase

Study results:

Hand hygiene compliance before aseptic tasks could be significantly increased by the intervention. Rates of blood stream infection in the intervention group were significantly lower than in the control group.

Reference:
Aghdassi S *et al.* (2020) ARIC 9:113.

HSB2_001EN_L0521_1



For the application of hand disinfectants at the point of care. Eurodispenser 3 flex



Characteristics

- Reliable, robust wireframe dispenser made from stainless steel
- Ensures multiple attaching options and a variety of point-of-use/point-of-care options
- Clamp for flat and round surfaces
- Clamp can be flexibly positioned at the back, at the bottom and a tangled positions without removing it from the dispenser
- Clamp can be turned 360°
- Easy installation and repositioning without tools
- Suitable for 500ml and 1000ml BODE bottles
- Possible accessories: Drop catcher
- Dispenser autoclavable



BODE Eurodispenser 1 plus range



For the application of hand disinfectants, wash and skin care lotions

- easy pump exchange through removal from the front
- reliable, robust metal dispenser
- easy installation even with limited space
- all standard bottles insertable
- simple and fast bottle exchange
- easy handling and cleaning
- dosing amount adjustable to approx. 0.75 to 1.5 ml per actuation
- dispenser is available in signal colour red and touchless version

Eurodispenser Safety plus



Modern plastic dispenser for wall mounting for the use of hygienic single-use bottles and pumps with long nozzle, which makes time-consuming reprocessing obsolete.

- suitable for BODE standard bottles (500 ml and 1000 ml) with single-use pumps with long nozzle
- also suitable for many competitors' euro bottles
- reliable plastic dispenser with modern and slim design
- wide arm lever for easy and intuitive use
- closed dispenser chassis, bottle is securely held in the dispenser
- integrated trick-lock to prevent product theft, without key (function not for all competitors' bottles given)
- integrated drip tray
- useable as table stand dispenser
- smooth surfaces and rounded edges for easy cleaning
- easy and fast installation by either screwing or adhesive solution, same drill scheme as common Eurodispensers
- simple and fast bottle exchange





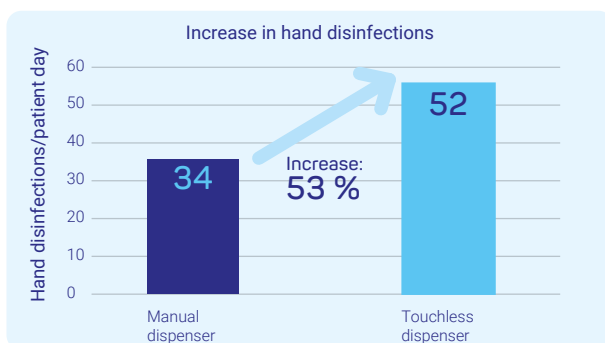
Eurodispenser RX5 Touchless



Hygienic and comfortable application with the touchless dispenser for disinfection and soaps.

- slim and modern design
- multifunctional use as wall dispenser or free standing
- clean application through optional drop catcher
- application strokes adjustable between 1 - 3 strokes
- robust plastic housing
- universal use with 500 ml Euro bottles

Touchless dispensers increase hand hygiene



The use of touchless hand disinfectant dispensers led to an increase in the number of hand disinfections in an observational study [1]. After replacing manual dispensers with touchless dispensers with sensor technology, the number of hand disinfections in an intensive care unit increased on average by 53 per cent. The result was not due to a short-lived interest in the technology but remained constant during the observation period of 12 weeks.

Reference:
1 Scheithauer S. *et al.* (2011) Hyg Med 36 (12): 496-498.

Versatile, flexible, economic. Dispensers for any need.



BODE Eurodispenser 2

Robust, autoclavable wire construction with integrated arm lever for hygienic product application.



BODE Eurodispenser 3

Robust, autoclavable wire construction with different attachment options to bed-frames.



Wallholder Plus

The space-saving and handy Wallholder Plus fits on every wall and ensures convenient use directly where you need it.





Hygiene Tower

Stable column for hand disinfectant dispensers, visually appealing, suitable for areas where it is not possible to install a wall dispenser. Compatible with BODE Eurodispenser 1 plus (touchless), Eurodispenser RX5 Touchless and Eurodispenser Safety Plus



Dispenser Tower

Support infection prevention in public areas. The Dispenser Tower with foot pedal allows for a hands-free application.



Use disinfectants safely. Always read the label and product information before use.

Please amend in accordance with local requirements (e.g. law of advertising, product status, CLP labelling).

HARTMANN SCIENCE CENTER
hartmann-science-center.com



Research for
infection protection

Expert advice

Our experts will advise you on our products
and on topics related to disinfection, hygiene and
infection protection.

science-center@hartmann.com

Tel.: +49 (0)40 - 54 00 6 -111



Helps. Cares. Protects.

PAUL HARTMANN AG
Paul-Hartmann-Straße 12
89522 Heidenheim
Germany

Phone: +49-7321-36-0
Fax: +49-7321-36-3636
info@hartmann.info
www.hartmann.info